

12-9129: Anti-GUCY2C (indusatumab biosimilar) mAb

Clonality : Monoclonal
Reactivity : Human
Alternative Name : DIAR6, GC-C, GUC2C, MECIL, MUCIL, STAR
Isotype : IgG1

Description

Research grade biosimilar. Not for use in therapeutic or diagnostic procedures for humans or animals.
Specificity: Human

Product Info

Amount : 50 µg / 100 µg
Purification : Purified from cell culture supernatant by affinity chromatography
Buffer :Lyophilized from sterile PBS, pH 7.4. Normally 5 % - 8% trehalose is added as protectants before lyophilization.
Content : Reconstituent :Reconstitute with deionized water
Preservative :0.1% Procline 300
Not Sterile
Storage condition : Store at -20°C (Avoid repeated freezing and thawing)

Application Note

Flow Cyt 1:100

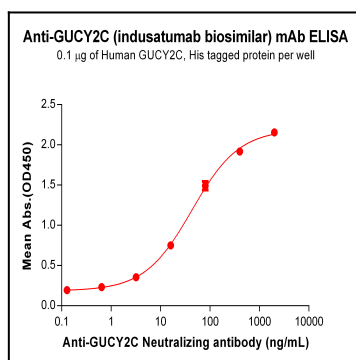


Figure 1. Flow cytometry analysis with Anti-GUCY2C(indusatumab biosimilar) mAb 1 µg/mL on Expi293 cells transfected with Human GUCY2C (Blue histogram) or Expi293 transfected with irrelevant protein (Red histogram).

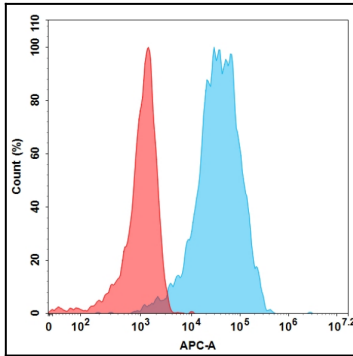


Figure 2. Flow cytometry analysis with Anti-GUCY2C(indusatumab biosimilar) mAb 1 μ g/mL on Expi293 cells transfected with Human GUCY2C (Blue histogram) or Expi293 transfected with irrelevant protein (Red histogram).