

11-2029: Anti Monkey Pox L1R Polyclonal Antibody

Clonality :	Polyclonal
Application :	WB
Format :	Purified
Isotype :	Rabbit IgG
Immunogen Information :	A partial length recombinant Monkey Pox L1R protein was used as the immunogen for this antibody.

Product Info

Amount :	25 µg / 100 µg
Purification :	Protein A Chromatography
Content :	25 µg in 50 µl/100 µg in 200 µl PBS containing 0.05% BSA and 0.05% sodium azide. Sodium azide is highly toxic.
Storage condition :	Store the antibody at 4°C, stable for 6 months. For long-term storage, store at -20°C. Avoid repeated freeze and thaw cycles.

Application Note

Recommended dilutions: WB: 01-0.5 µg/ml. However, this need to be optimized based on the research applications.

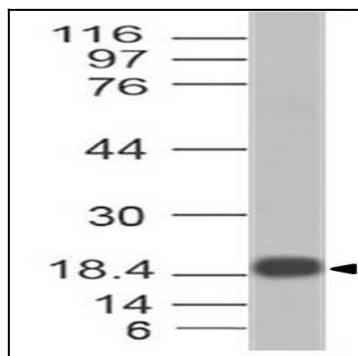


Figure-1: Western Blot analysis of Monkey Pox L1R. Anti-Monkey Pox L1R antibody (11-2029) was used at 0.1 µg/ml on Recombinant protein.