

## 30-2693: Anti-Blood Group A PE

<b>Clonality :</b>	Monoclonal
<b>Clone Name :</b>	HE-193
<b>Application :</b>	FACS
<b>Reactivity :</b>	Human
<b>Conjugate :</b>	PE
<b>Format :</b>	Purified
<b>Isotype :</b>	Mouse IgM
<b>Immunogen Information :</b>	Mixture of erythrocytes of group A1 and glycoprotein fraction isolated from saliva of secretors with blood group A.

### Description

The antibody HE-193 recognizes human blood group A (monofucosyl and difucosyl A antigens with chain types 1 and 2, A antigens with chain types 3, 4, 5, 6) and Forssman antigen.

The antibody HE-193 recognizes human blood group A (monofucosyl and difucosyl A antigens with chain types 1 and 2, A antigens with chain types 3, 4, 5, 6) and Forssman antigen. Human blood group A antigen belongs to a group of carbohydrate determinants carried on both glycolipids and glycoproteins; it is detected on erythrocytes and certain epithelial cells.

### Product Info

<b>Amount :</b>	0.1 mg
<b>Purification :</b>	Purified antibody is conjugated with R-phycoerythrin (PE) under optimum conditions. Unconjugated antibody and free fluorochrome are removed by size-exclusion chromatography.
<b>Content :</b>	0.1 mg/ml, Stabilizing Tris buffered saline (TBS), pH 8.0, 15 mM sodium azide.
<b>Storage condition :</b>	Store at 2-8°C. Protect from prolonged exposure to light. Do not freeze.

### Application Note

Flow cytometry: Recommended dilution: 2-5 µg/ml.

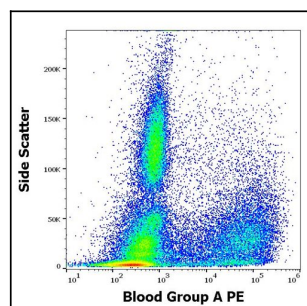


Figure-1: Flow cytometry surface staining pattern of human peripheral whole blood stained using anti-human Blood Group A (HE-193) PE antibody (concentration in sample 5 1/4 µg/ml).

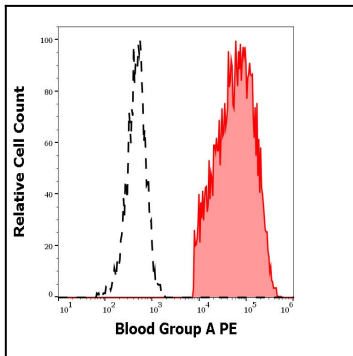


Figure-2: Separation of human erythrocytes (red-filled) from lymphocytes (black-dashed) in flow cytometry analysis (surface staining) of human peripheral whole blood stained using anti-human Blood Group A (HE-193) PE antibody (concentration in sample 5  $\hat{1}$ /<sub>4</sub>g/ml).