

30-2692: Anti-Hu CD37 Purified

| | |
|--------------------------------|-------------------------------|
| Clonality : | Monoclonal |
| Clone Name : | MB-1 |
| Application : | IP,IHC,FACS |
| Reactivity : | Human |
| Conjugate : | PE |
| Gene ID : | 951 |
| Uniprot ID : | P11049 |
| Format : | Purified |
| Alternative Name : | GP52-40, tetraspanin 26 |
| Isotype : | Mouse IgG1 kappa |
| Immunogen Information : | lymphomatous lymph node cells |

Description

The mouse monoclonal antibody MB-1 recognizes an extracellular epitope of CD37, a tetraspanin family transmembrane glycoprotein. CD37 is a 40-64 kDa tetraspanin family glycoprotein, which forms complexes in the B cell membrane with MHC class II, CD53, CD81, and CD82. It is expressed highly on mature B cells and neoplastic B cells, but it is lost on plasma cells, as well as on pro-B cells. Lower expression was detected on monocytes, macrophages, and dendritic cells.

Product Info

| | |
|----------------------------|---|
| Amount : | 0.1 mg |
| Purification : | Purified by protein-A affinity chromatography. |
| Content : | 1 mg/ml, Phosphate buffered saline (PBS), pH 7.4, 15 mM sodium azide. |
| Storage condition : | Store at 2-8°C. Do not freeze. |

Application Note

Flow cytometry: Recommended dilution: 1-4 µg/ml.

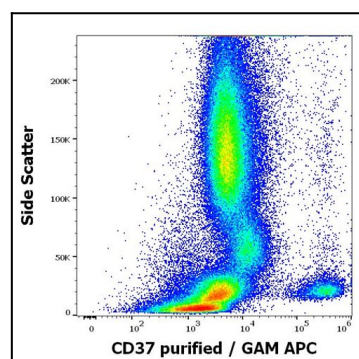


Figure-1: Flow cytometry surface staining pattern of human peripheral whole blood stained using anti-human CD37 (MB-1) purified antibody (concentration in sample 0,2 ¼g/ml, GAM APC).

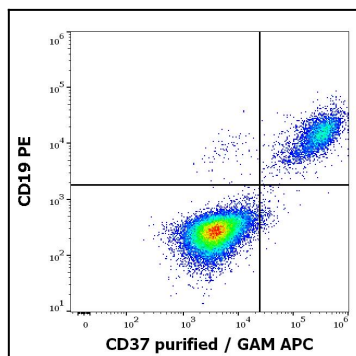


Figure-2: Flow cytometry multicolor surface staining of human lymphocytes stained using anti-human CD37 (MB-1) purified antibody (concentration in sample 0,2 $\mu\text{g/ml}$, GAM APC) and anti-human CD19 (LT19) PE antibody (20 μl reagent / 100 μl of peripheral whole blood).

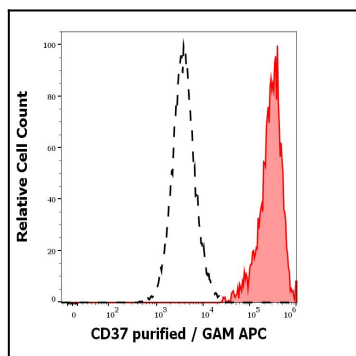


Figure-3: Separation of human CD37 positive lymphocytes (red-filled) from human CD37 negative lymphocytes (black-dashed) in flow cytometry analysis (surface staining) of peripheral whole blood stained using anti-human CD37 (MB-1) purified antibody (concentration in sample 0,2 $\mu\text{g/ml}$, GAM APC).