

## 12-9111: Anti-CCR8 mAb

<b>Clonality :</b>	Monoclonal
<b>Application :</b>	ELISA,FACS
<b>Reactivity :</b>	Human
<b>Format :</b>	Purified
<b>Alternative Name :</b>	CC-CKR-8, CCR-8, CDw198, CKRL1, CMKBR8, CMKBRL2, CY6, GPRCY6, TER1,
<b>Isotype :</b>	IgG1

### Description

Formulation : Powder

Research grade biosimilar.

### Product Info

<b>Amount :</b>	50 µg / 100 µg
<b>Purification :</b>	Purified from cell culture supernatant by affinity chromatography
<b>Content :</b>	Lyophilized from sterile PBS, pH 7.4. Normally 5 % - 8% trehalose is added as protectants before lyophilization. Not Sterile
<b>Storage condition :</b>	Store at -20°C (Avoid repeated freezing and thawing)

### Application Note

ELISA 1:5000-10000, Flow Cyt 1:100

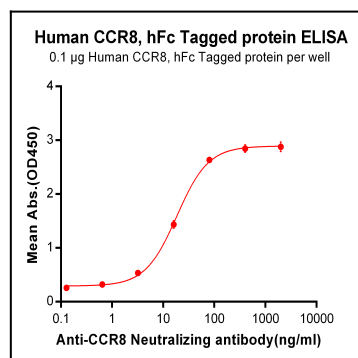


Figure 1. ELISA plate pre-coated by 1½µg/ml (100½µl/well) Human CCR8, hFc Tag can bind Anti-CCR8 Neutralizing antibody in a linear range of 3.2-80 ng/ml.

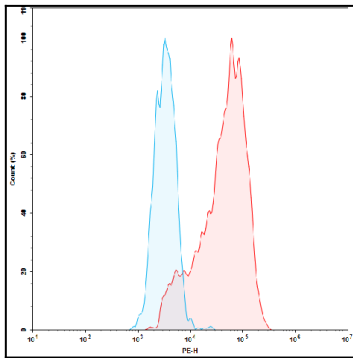


Figure 2. Flow cytometry analysis with 1 ug/ml Anti-CCR8 neutralizing antibody on 293T-CCR8 (293T cells transduced with gene for full length CCR8) Human Cell Line (Red histogram) or 293T Cell Line (Blue histogram).