

## 36-1703: Monoclonal Antibody to CD43 (T-Cell Marker)(Clone : Bra7G)

|                                |  |
|--------------------------------|--|
| <b>Clonality :</b>             | Monoclonal                                     |
| <b>Clone Name :</b>            | Bra7G  |
| <b>Application :</b>           | FACS,IF,IHC                                    |
| <b>Reactivity :</b>            | Human  |
| <b>Gene :</b>                  | SPN  |
| <b>Gene ID :</b>               | 6693   |
| <b>Uniprot ID :</b>            | P16150   |
| <b>Format :</b>                | Purified                                       |
| <b>Alternative Name :</b>      | SPN, CD43                                      |
| <b>Isotype :</b>               | Mouse IgM, kappa                               |
| <b>Immunogen Information :</b> | Immature pluripotent human leukemia K562 cells |

### Description

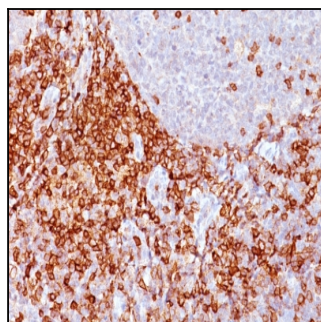
It recognizes a cell surface glycoprotein of 95/115/135kDa (depending upon the extent of glycosylation), identified as CD43 (Workshop V). Epitope of MAb Bra7G is clearly different from that of MAb DF-T1, called b as opposed to a for DF-T1. 70-90% of T-cell lymphomas and from 22-37% of B-cell lymphomas express CD43. No reactivity has been observed with reactive B-cells. So a B-lineage population that co-expresses CD43 is highly likely to be a malignant lymphoma, especially a low-grade lymphoma, rather than a reactive B-cell population. When CD43 antibody is used in combination with anti-CD20, effective immunophenotyping of the lymphomas in formalin-fixed tissues can be obtained. Co-staining of a lymphoid infiltrate with anti-CD20 and anti-CD43 argues against a reactive process and favors a diagnosis of lymphoma.

### Product Info

|                            |   |
|----------------------------|---|
| <b>Amount :</b>            | 100 µg  |
| <b>Purification :</b>      | Affinity Chromatography   |
| <b>Content :</b>           | 100 µg in 500 µl PBS containing 0.05% BSA and 0.05% sodium azide. Sodium azide is highly toxic.                               |
| <b>Storage condition :</b> | Store the antibody at 4°C; stable for 6 months. For long-term storage; store at -20°C. Avoid repeated freeze and thaw cycles. |

### Application Note

Flow Cytometry (1-2ug/million cells); Immunofluorescence (1-2ug/ml); ,Immunohistochemistry (Formalin-fixed) (1-2ug/ml for 30 minutes at RT),(For staining of formalin-fixed tissues, digest sections with trypsin at 1mg/ml PBS, 15 min at room temp),



Formalin-fixed, paraffin-embedded human Spleen stained with CD43 Monoclonal Antibody (Bra7G).