

44-1193: Anti-CD20 Monoclonal Antibody (Clone:IHC532)

Clonality :	Monoclonal
Clone Name :	IHC532
Application :	IHC
Reactivity :	Human
Gene :	MS4A1
Gene ID :	931
Uniprot ID :	P11836
Format :	Purified
Alternative Name :	B-lymphocyte antigen CD20, B-lymphocyte surface antigen B1, Bp35, Leukocyte surface antigen Leu-16, Membrane-spanning 4-domains subfamily A member 1
Isotype :	Mouse IgG2a, Kappa

Description

Cluster of Differentiation (CD20), also known as B-Lymphocyte Antigen, is a non-glycosylated protein expressed on the surface of normal and malignant B-cells, which functions in chemokine signaling and microenvironmental interactions of B-cells. Anti-CD20 stains a minority of Reed-Sternberg cells with Hodgkin's disease. Since CD20 does not stain T-cell malignancies, it is a very useful marker for B-cell lymphomas. CD20 is also not reactive on non-hematopoietic neoplasms.

Product Info

Amount :	0.1 ml / 1 ml
Purification :	Protein A/G Chromatography
Storage condition :	Store at 2°C - 8°C.

Application Note

Recommended dilutions: Immunohistochemical analysis: 1:100 - 1:200. However, this need to be optimized based on the research applications.

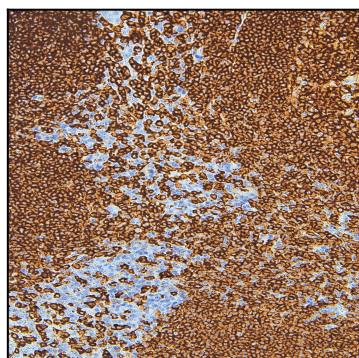


Figure 1: Immunohistochemical analysis of CD20 (IHC532) on Tonsil.