

10-10042: SARS CoV2 Spike S1 Antibody (Clone: ABM3D6.1G6) (13-33aa)

Clonality :	Monoclonal
Clone Name :	ABM3D6.1G6
Application :	WB
Uniprot ID :	P0DTC2
Format :	Purified
Alternative Name :	nCov, Sars-Cov-2
Isotype :	Mouse IgG2b, Kappa
Immunogen Information :	A Synthetic peptide of SARS CoV2 spike Protein (amino acids 13-33) was used as the immunogen for this antibody. It is specific for SARS-CoV2.

Description

The spike (S) protein of nCoV/SARS-CoV-2/COVID-19 is one of the structural glycoproteins that remains embedded in viral envelope and acts as the fundamental component of early viral infection of nCoV/SARS-CoV-2/COVID-19 upon binding the host receptor. The nCoV/SARS-CoV-2/COVID-19 has a trimeric spike protein which has two main domains such as S1 domain for receptor binding and S2 domain for membrane fusion and several specific cleavage sites in S1- S2 boundary junction that needs a novel, endocytic protease- primed cleavage to get activated during infection. It mainly binds to the furin protein on the cell membrane which performs trypsin like proteolytic cleavage and then the protein gets activated facilitating its entry into the host. This transmembrane spike protein of nCoV/SARS-CoV-2/COVID-19 shares binding property to the Angiotensin Converting Enzyme 2 (ACE2) likely to that of SARS- CoV. The high affinity of nCoV/SARS-CoV-2/COVID-19 Spike protein for human ACE2 may contribute to the apparent ease with which nCoV/SARS-CoV-2/COVID-19 can spread from human-to-human and make nCoV/SARS-CoV-2/COVID-19 pandemic.

Product Info

Amount :	25ug / 100 µg
Purification :	Protein G Purification
Content :	25 µg in 50 µl/100 µg in 200 µl PBS containing 0.05% BSA and 0.05% sodium azide. Sodium azide is highly toxic.
Storage condition :	Store the antibody at 4°C, stable for 6 months. For long-term storage, store at -20°C. Avoid repeated freeze and thaw cycles.

Application Note

Recommended dilutions: WB: 0.5-1 µg/ml. However, this need to be optimized based on the research applications.

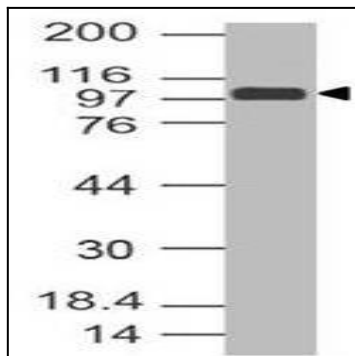


Figure-1: Western Blot analysis of SARS CoV2 Spike S1 Antibody: Anti- SARS CoV2 Spike S1 Antibody (Clone: ABM3D6.1G6) was used at 0.5 $\mu\text{g/ml}$ on mammalian expressed full-length COVID-19 Spike protein (50ng/ lane).