

## 12-9103: Anti-IL2RA Antibody (basiliximab biosimilar) (CHI621)

<b>Clonality :</b>	Monoclonal
<b>Application :</b>	ELISA,FACS
<b>Reactivity :</b>	Human
<b>Gene ID :</b>	3559
<b>Uniprot ID :</b>	P01589
<b>Format :</b>	Purified
<b>Alternative Name :</b>	CHI621, IL2RA,CD25,p55,IL2-RA,IL-2-RA

### Product Info

<b>Amount :</b>	50 µg / 100 µg
<b>Purification :</b>	Purified from cell culture supernatant by affinity chromatography.
<b>Content :</b>	Preservative: 0.1% Procline 300. Constituents: 50% Glycerol; PBS, pH 7.4; 0.1% BSA Not Sterile
<b>Storage condition :</b>	Store at -20°C (Avoid repeated freezing and thawing).

### Application Note

Lyophilized. Reconstitute with deionized water. ELISA 1:5000-10000, Flow Cyt 1:100

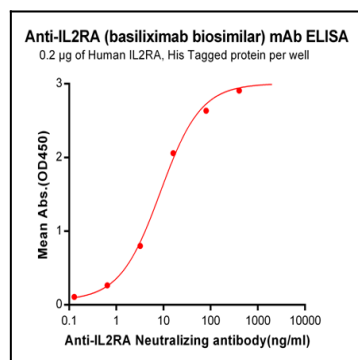


Figure-1: ELISA plate pre-coated by 2 µg/ml (100 µl/well) Human IL2RA, His tagged protein can bind Anti-IL2RA Neutralizing antibody in a linear range of 0.64-400 ng/ml.

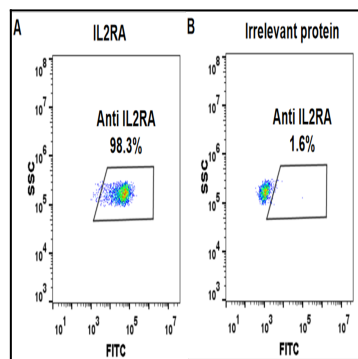


Figure-2: HEK293 cell line transfected with irrelevant protein (B) and human IL2RA(A) were surface stained with Anti-IL2RA mAb 1µg/ml (basiliximab) followed by Alexa 488-conjugated anti-human IgG secondary antibody.