

12-9089: Anti-CD22 Antibody (pinatuzumab biosimilar) (FCU2803)

Clonality :	Monoclonal
Application :	ELISA,FACS
Reactivity :	Human
Gene ID :	933
Uniprot ID :	P20273
Format :	Purified
Alternative Name :	ACD22-VCMAE,DCDT2980S,FCU2803,RG-7593,RO5541072-000, CD22, SIGLEC2, BL-CAM, SIGLEC-2, Siglec2, SIGLEC2FLJ22814
Isotype :	Human IgG1

Product Info

Amount :	50 µg / 100 µg
Purification :	Purified from cell culture supernatant by affinity chromatography.
Content :	Preservative: 0.1% Procline 300. Constituents: 50% Glycerol; PBS, pH 7.4; 0.1% BSA Not Sterile
Storage condition :	Store at -20°C (Avoid repeated freezing and thawing).

Application Note

Reconstitute with deionized water. ELISA 1:5000-10000, Flow Cyt 1:100

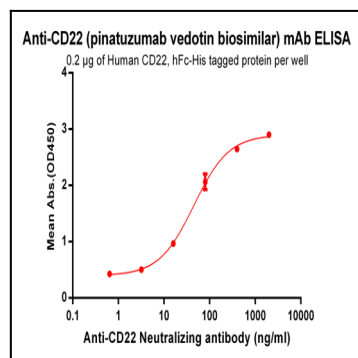


Figure-1: ELISA plate pre-coated by 2 µg/ml (100 µl/well) Human CD22, hFc-His tagged protein can bind Anti-CD22 Neutralizing antibody in a linear range of 3.2-400 ng/ml.

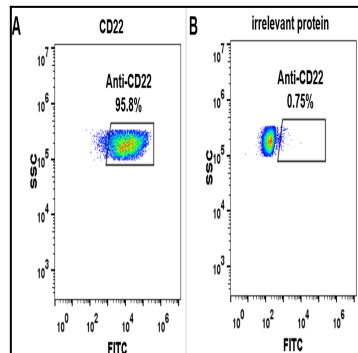


Figure-2: HEK293 cell line transfected with irrelevant protein (B) and human CD22(A) were surface stained with Anti-CD22 mAb 1 µg/ml (pinatuzumab vedotin) followed by Alexa 488-conjugated anti-human IgG secondary antibody.