

## 12-9085: Anti-CD20 (rituximab biosimilar) (MS4A1)

<b>Clonality :</b>	Monoclonal
<b>Application :</b>	FACS
<b>Reactivity :</b>	Human
<b>Gene ID :</b>	931
<b>Uniprot ID :</b>	P11836
<b>Format :</b>	Purified
<b>Alternative Name :</b>	MS4A1,CD20, MS4A-1, B1; Bp35; CD20; CVID5; LEU-16; MS4A2; S7

### Product Info

<b>Amount :</b>	50 µg / 100 µg
<b>Purification :</b>	Purified from cell culture supernatant by affinity chromatography.
<b>Content :</b>	Preservative: 0.1% Procline 300. Constituents: 50% Glycerol; PBS, pH 7.4; 0.1% BSA Not Sterile
<b>Storage condition :</b>	Store at -20°C (Avoid repeated freezing and thawing).

### Application Note

Reconstitute with deionized water. Flow Cyt 1:100

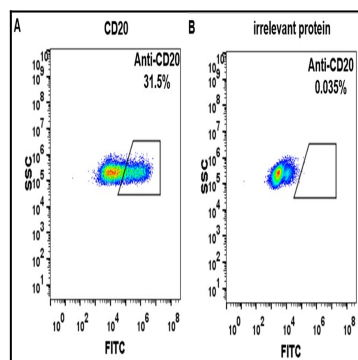


Figure-1: HEK293 cell line transfected with irrelevant protein (B) and human CD20 (A) were surface stained with anti-CD20 neutralizing antibody 1 $\mu$ g/ml (rituximab) followed by Alexa 488-conjugated anti-human IgG secondary antibody.