

12-9082: Anti-CTLA4 Antibody (ipilimumab biosimilar) (MDX-CTLA-4)

Clonality :	Monoclonal
Application :	ELISA
Reactivity :	Human
Gene ID :	1493
Uniprot ID :	P16410
Format :	Purified
Alternative Name :	BMS-734016, MDX-010, MDX-CTLA-4, CTLA4, CD152
Isotype :	Human IgG1

Product Info

Amount :	50 µg / 100 µg
Purification :	Purified from cell culture supernatant by affinity chromatography.
Content :	Preservative: 0.1% Procline 300. Constituents: 50% Glycerol; PBS, pH 7.4; 0.1% BSA Not Sterile
Storage condition :	Store at -20°C (Avoid repeated freezing and thawing).

Application Note

Reconstitute with deionized water. ELISA 1:5000-10000

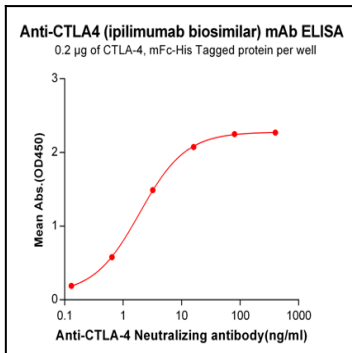


Figure-1: ELISA plate pre-coated by 2 µg/ml (100 µl/well) Human CTLA4, mFc-His tagged protein can bind Anti-CTLA4 Neutralizing antibody in a linear range of 0.13-16.0 ng/ml.

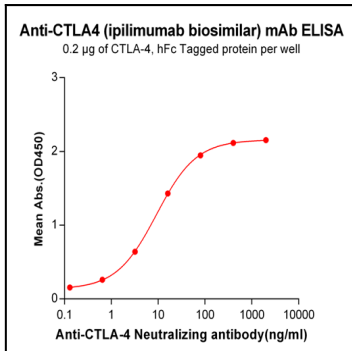


Figure-2: ELISA plate pre-coated by 2 µg/ml (100 µl/well) Human CTLA4, hFc tagged protein can bind Anti-CTLA4 Neutralizing antibody in a linear range of 0.64-80.0 ng/ml.

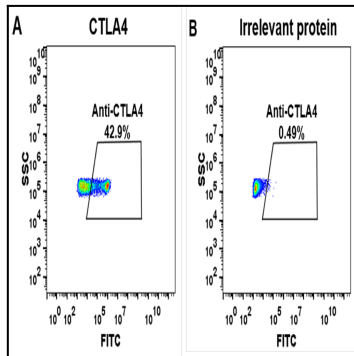


Figure-3: HEK293 cell line transfected with irrelevant protein (B) and human CTLA4 (A) were surface stained with anti-CTLA4 neutralizing antibody 1 μ g/ml (ipilimumab) followed by Alexa 488-conjugated anti-human IgG secondary antibody.