

12-9081: Anti-Mesothelin Antibody (amatuximab biosimilar) (MORAb-009)

Clonality :	Monoclonal
Application :	ELISA
Reactivity :	Human
Gene ID :	10232
Uniprot ID :	Q13421
Format :	Purified
Alternative Name :	MORAb-009, MSLN, Mesothelin, MPF
Isotype :	IgG1

Description

Host: Chimeric

Product Info

Amount :	50 µg / 100 µg
Purification :	Purified from cell culture supernatant by affinity chromatography.
Content :	Lyophilized from sterile PBS, pH 7.4. Normally 5 % - 8% trehalose is added as protectants before lyophilization. Please see Certificate of Analysis for specific instructions. Not Sterile
Storage condition :	Store at -20°C (Avoid repeated freezing and thawing).

Application Note

Reconstitute with deionized water. ELISA 1:5000-10000

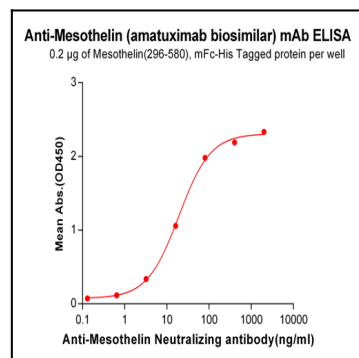


Figure-1: ELISA plate pre-coated by 2µg/ml (100 µl/well) Human Mesothelin, mFc-His tagged protein can bind Anti-Mesothelin Neutralizing antibody in a linear range of 3.2-80.0 ng/ml.

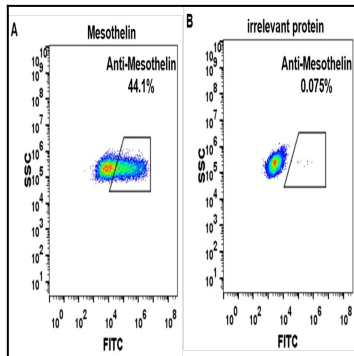


Figure-2: HEK293 cell line transfected with irrelevant protein (B) and human Mesothelin (A) were surface stained with anti-Mesothelin neutralizing antibody 1 μ g/ml (amatuximab) followed by Alexa 488-conjugated anti-human IgG secondary antibody.