

12-9069: Anti-PDL1 Antibody (atezolizumab biosimilar) (RG7446)

Clonality :	Monoclonal
Application :	ELISA,FACS
Reactivity :	Human
Gene ID :	29126
Uniprot ID :	Q9NZQ7
Format :	Purified
Alternative Name :	MPDL3280A, RG7446, PD-L1, CD274, B7-H1, PDCD1L1, PDCD1LG1
Isotype :	Human IgG1

Product Info

Amount :	50 µg / 100 µg
Purification :	Purified from cell culture supernatant by affinity chromatography.
Content :	Preservative: 0.1% Procline 300. Constituents: 50% Glycerol; PBS, pH 7.4; 0.1% BSA Not Sterile
Storage condition :	Store at -20°C (Avoid repeated freezing and thawing).

Application Note

Reconstitute with deionized water. ELISA 1:5000-10000, Flow Cyt 1:100

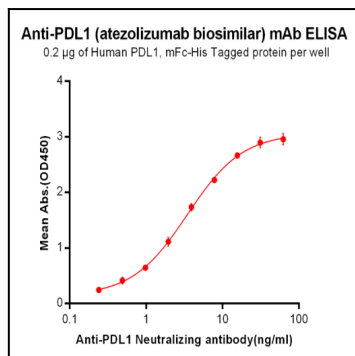


Figure-1: ELISA plate pre-coated by 2 µg/ml (100 µl/well) Human PDL1, mFc-His tagged protein can bind Anti-PDL1 Neutralizing antibody in a linear range of 0.24-7.81 ng/ml.

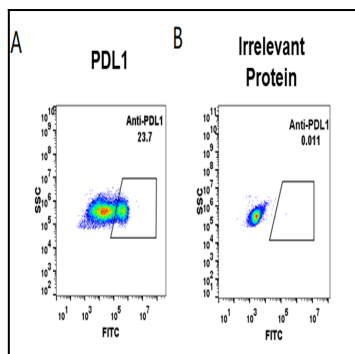


Figure-2: HEK293 cell line transfected with irrelevant protein (B) and human PDL1(A) were surface stained with anti-PDL1 neutralizing antibody 1 µg/ml (atezolizumab) followed by Alexa 488-conjugated anti-rabbit IgG secondary antibody.