

12-9062: Anti-CS1 Antibody (elotuzumab biosimilar) (HuLuc63)

Clonality :	Monoclonal
Application :	ELISA,FACS
Reactivity :	Human
Gene :	SLAMF7
Gene ID :	57823
Uniprot ID :	Q9NQ25
Format :	Purified
Alternative Name :	BMS-901608, HuLuc63, PDL-063, PDL063, CS1, CD319, SLAMF7, CRACC
Isotype :	Human IgG1

Product Info

Amount :	50 µg / 100 µg
Purification :	Purified from cell culture supernatant by affinity chromatography.
Content :	Preservative: 0.1% Procline 300. Constituents: 50% Glycerol; PBS, pH 7.4; 0.1% BSA Not Sterile
Storage condition :	Store at -20°C (Avoid repeated freezing and thawing).

Application Note

Reconstitute with deionized water. ELISA 1:1000, Flow Cyt 1:100

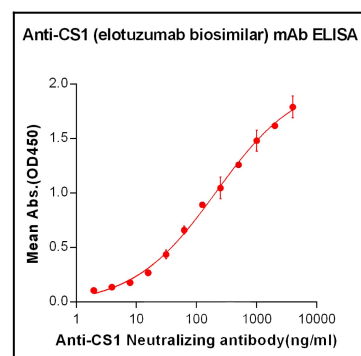


Figure 1. ELISA plate pre-coated by 2 µg/ml (100 µL/well) Human CS1, hFc-His tagged protein can bind Anti-CS1 Neutralizing antibody in a linear range of 7.81-210.7 ng/ml.

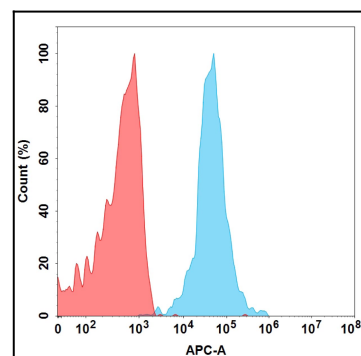


Figure 2. Flow cytometry analysis with 15 µg/mL Anti-CS1 (elotuzumab) mAb on Expi293 cells transfected with Human CS1 protein (Blue histogram) or Expi293 transfected with irrelevant protein (Red histogram).