

21-6002: SARS CoV2 Spike S1 C-Term His Tag Protein

Description

Source: **Covid 19 Spike S1-His in CHO-K1**. The spike protein (S1) of coronavirus (CoV2) attaches the virus to its cellular receptor, angiotensin-converting enzyme 2 (ACE2). A defined receptor-binding domain (RBD) on S mediates this interaction. The S protein plays key parts in the induction of neutralizing-antibody and T-cell responses, as well as protective immunity.

Product Info

| | |
|----------------------------|---|
| Amount : | 50 µg |
| Content : | 50 mM Tris, pH-8.0, 150 mM NaCl, 10% Glycerol |
| Storage condition : | Store at -20°C |
| Amino Acid : | MGIK PHGQGHIGEM SFLQHNKCEC RPKKDRARQE KKSVRGKGKG QKRKRKKSRY KSWSVYVGAR CCLMPWSLPG PHPCGPCSER RKHLFVQDPQ TCKCSCKNTD SRCKARQLEL NERTLEHHHHHH |

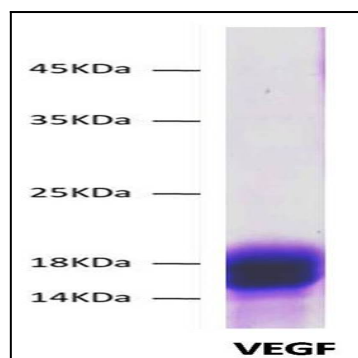


Figure-1: SDS-PAGE analysis of purified Recombinant VEGF Protein was run on a 4-20% Gradient SDS-PAGE (Reducing) gel followed by Coomassie blue staining.