

## 21-6003: SARS CoV2 Spike S1 C-Term His Tag Protein

### Description

Source: **Covid 19 Spike S1-His in CHO-K1**.The spike protein (S1) of coronavirus (CoV2) attaches the virus to its cellular receptor, angiotensin-converting enzyme 2 (ACE2). A defined receptor-binding domain (RBD) on S mediates this interaction.The S protein plays key parts in the induction of neutralizing-antibody and T-cell responses, as well as protective immunity.

### Product Info

<b>Amount :</b>	50 µg
<b>Content :</b>	50 mM Tris, pH-8.0, 150 mM NaCl, 10% Glycerol.
<b>Storage condition :</b>	Store at-20°C
<b>Amino Acid :</b>	MDFHYNEKRIYWVDLERQLLQRVFLNGSRQERVCNIEKNVSGMAINWINEEVIWSNQQEGIIITVDMKGNNSH ILLSALKY PANVAVDPVERFIFWSSEVAGSLYRADLDGVGVKALLETSEKITAVSLDVLDKRLFVIQYNREGSNSLEHHHHH H

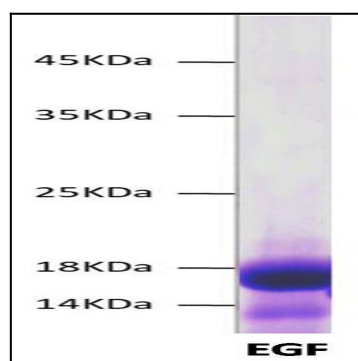


Figure-1: SDS-PAGE analysis of purified Recombinant EGF Protein was run on a 4-20% Gradient SDS-PAGE (Reducing) gel followed by Coomassie blue staining.