

## 30-2687: Mouse IgG1 Isotype Control DyLight® 650 (Clone : MOPC-21)

**Clonality :** Monoclonal  
**Clone Name :** MOPC-21  
**Application :** FACS , IHC(P), IHC(F), ICC, WB  
**Conjugate :** DyLight® 650  
**Isotype :** Mouse IgG1 kappa

### Description

**Specificity :** This mouse IgG1 kappa monoclonal antibody (clone MOPC-21) with unknown Specificity has been confirmed as a good negative control with human and rat species, based on multiple testing on rat and human tissues.

### Product Info

**Amount :** 0.1 mg  
**Purification :** The purified antibody is conjugated with tandem dye DyLight® 650 under optimum conditions. The conjugate is purified by size-exclusion chromatography.  
**Content :** 0.1 mg/ml  
Formulation : Stabilizing phosphate buffered saline (PBS) solution containing 15 mM sodium azide  
**Storage condition :** Store in the dark at 2-8°C. Do not freeze. Avoid prolonged exposure to light.

### Application Note

**Negative control:** The reagent is intended as an isotype control to establish the amount of non-specific antibody binding. For your particular experiment, use the same concentration of this control antibody as the recommended working concentration of the antigen-specific antibody. Also, when working with prediluted antibodies, dilute the isotype control to the same concentration as is the concentration of the antigen-specific antibody in the prediluted antibody solution you are using. If under particular experimental conditions the background signal of the isotype control is too high (usually when working concentrations of used antibodies are above 10 µg/ml of incubation mixture), change the conditions of your experiment to reduce the background.

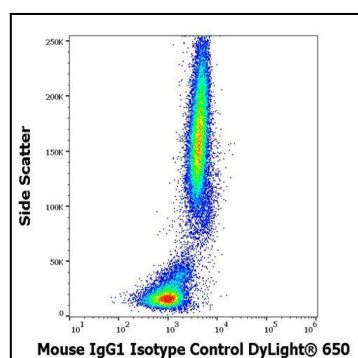


Figure 1 : Flow cytometry surface nonspecific staining pattern of human peripheral whole blood stained using mouse IgG1 Isotype control (MOPC-21) DyLight® 650 antibody (concentration in sample 9 µg/ml).