

## 30-2680: Rat IgG2a Isotype Control PE Antibody (Clone : S193)

**Clonality :** Monoclonal  
**Clone Name :** RTG2A1-1  
**Application :** FACS  
**Conjugate :** PE  
**Isotype :** Rat IgG2a

### Description

**Specificity :** This rat IgG2a kappa monoclonal antibody (clone RTG2A1-1, also known as G2A-1-1 or KLH/G2A-1-1) detects specifically the hemocyanin of keyhole limpet and can be used as a negative control antibody in other species.

### Product Info

**Amount :** 0.1 mg  
**Purification :** The purified antibody is conjugated with R-phycoerythrin (PE) under optimum conditions. The conjugate is purified by size-exclusion chromatography.  
**Content :** 0.1 mg/ml  
Formulation : Stabilizing phosphate buffered saline (PBS) solution containing 15 mM sodium azide  
**Storage condition :** Store in the dark at 2-8°C. Do not freeze. Avoid prolonged exposure to light.

### Application Note

**Negative control:** The reagent is intended as an isotype control to establish the amount of non-specific antibody binding. For your particular experiment, use the same concentration of this control antibody as the recommended working concentration of the antigen-specific antibody. Also, when working with prediluted antibodies, dilute the isotype control to the same concentration as is the concentration of the antigen-specific antibody in the prediluted antibody solution you are using. If under particular experimental conditions the background signal of the isotype control is too high (usually when working concentrations of used antibodies are above 10  $\mu\text{g/ml}$  of incubation mixture), change the conditions of your experiment to reduce the background.

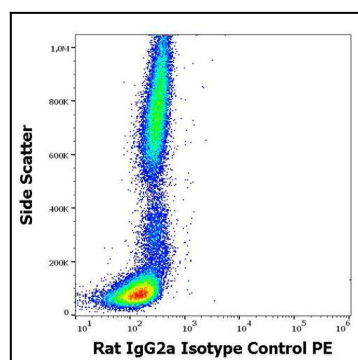


Figure 1 : Flow cytometry surface nonspecific staining pattern of human peripheral whole blood stained using rat IgG2a Isotype control (RTG2A1-1) FITC antibody (concentration in sample 15  $\mu\text{g/ml}$ ).