

30-2669: Anti-Human CD100 PE (Clone : 133-1C6)

Clonality :	Monoclonal
Clone Name :	133-1C6
Application :	FACS
Reactivity :	Human
Conjugate :	PE
Gene :	SEMA4D
Gene ID :	10507
Alternative Name :	COLL4, SEMA4D, semaphorin 4D,semaphorin 4D
Isotype :	Mouse IgM
Immunogen Information :	PHA stimulated human PBL

Description

CD100, also known as Semaphorin 4D, is a homodimerizing type I transmembrane glycoprotein containing an extracellular semaphorin domain. It is expressed on most hematopoietic cells with the exception of immature bone marrow cells, erythrocytes and platelets. A 120 kDa soluble form is generated from the transmembrane form by proteolytic cascade following primary T and B cell activation. It seems CD100 acts through dampening CD72-mediated negative signaling. CD100 promotes angiogenesis, invasive growth, proliferation and anti-apoptosis of cancer cells in vitro. Higher expression levels of CD100 correlate with poor survival in soft tissue sarcoma patients.

Specificity : The mouse monoclonal antibody 133-1C6 recognizes an extracellular epitope of CD100, an approximately 150 kDa (when reduced) semaphorin family member expressed mainly on lymphocytes, NK cells, monocytes/macrophages and granulocytes, but also on some non-hematopoietic cells.

Product Info

Amount :	100 tests
Purification :	The purified antibody is conjugated with R-phycoerythrin (PE) under optimum conditions. The conjugate is purified by size-exclusion chromatography.
Content :	Formulation : Stabilizing phosphate buffered saline (PBS) solution containing 15 mM sodium azide
Storage condition :	Store in the dark at 2-8°C. Do not freeze. Avoid prolonged exposure to light.

Application Note

Flow cytometry: The reagent is designed for analysis of human blood cells using 10⁵ cells / 100 μl of whole blood or 10⁶ cells in a suspension. The content of a vial (1 ml) is sufficient for 100 tests.

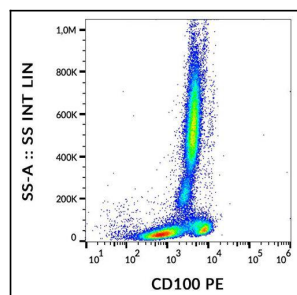


Figure 1 : Flow cytometry analysis (surface staining) of human peripheral blood with anti-CD100 (133-1C6) PE.