

36-1701: Monoclonal Antibody to CD43 (T-Cell Marker)(Clone : SPN/839)

Clonality :	Monoclonal
Clone Name :	SPN/839
Application :	FACS,IF,WB,IHC
Reactivity :	Human
Gene :	SPN
Gene ID :	6693
Uniprot ID :	P16150
Format :	Purified
Alternative Name :	SPN, CD43
Isotype :	Mouse IgG1, kappa
Immunogen Information :	Recombinant full-length human SPN protein

Description

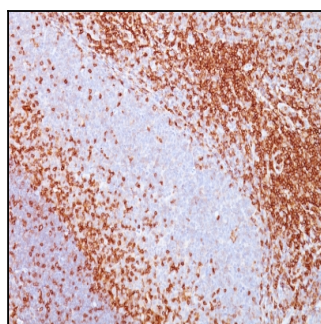
It recognizes a cell surface glycoprotein of 95/115/135kDa (depending upon the extent of glycosylation), identified as CD43. 70-90% of T-cell lymphomas and from 22-37% of B-cell lymphomas express CD43. No reactivity has been observed with reactive B-cells. So a B-lineage population that co-expresses CD43 is highly likely to be a malignant lymphoma, especially a low-grade lymphoma, rather than a reactive B-cell population. When CD43 antibody is used in combination with anti-CD20, effective immunophenotyping of the lymphomas in formalin-fixed tissues can be obtained. Co-staining of a lymphoid infiltrate with anti-CD20 and anti-CD43 argues against a reactive process and favors a diagnosis of lymphoma.

Product Info

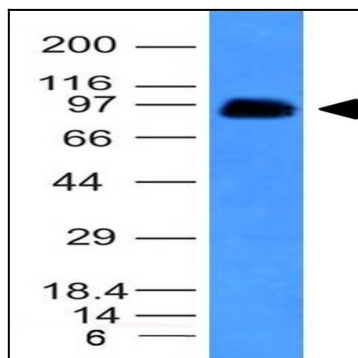
Amount :	100 µg
Purification :	Affinity Chromatography
Content :	100 µg in 500 µl PBS containing 0.05% BSA and 0.05% sodium azide. Sodium azide is highly toxic.
Storage condition :	Store the antibody at 4°C; stable for 6 months. For long-term storage; store at -20°C. Avoid repeated freeze and thaw cycles.

Application Note

Flow Cytometry (1-2ug/million cells); Immunofluorescence (1-2ug/ml); ,Western Blot (1-2ug/ml); ,Immunohistochemistry (Formalin-fixed) (1-2ug/ml for 30 minutes at RT),(Staining of formalin-fixed tissues requires heating tissue sections in 10mM Tris with 1mM EDTA, pH 9.0, for 45 min at 95°C followed by cooling at RT for 20 minutes);



Formalin-fixed, paraffin-embedded human Spleen stained with CD43 Monoclonal Antibody (SPN/839).



Western Blot Analysis of human Spleen Lysate using CD43 Monoclonal Antibody (SPN/839).