

30-2643: Anti-Mouse CD16/CD32 FITC (Clone : 93)

Clonality :	Monoclonal
Clone Name :	93
Application :	FACS
Reactivity :	Mouse
Conjugate :	FITC
Gene :	Fcgr2, Fcgr3
Gene ID :	14130
Alternative Name :	CD16, CD32, FcgammaRIII, FCgammaRII, FCGR3, FCGR2,
Isotype :	Rat IgG2a lambda
Immunogen Information :	Murine pre-B cells

Description

CD16 (FcgammaRIII) is a 50-65 kDa glycoprotein serving as a low affinity IgG receptor. Unlike human, the murine protein is expressed only as a transmembrane isoform. Also CD32 (FcgammaRII) is a low affinity receptor for IgG, but its affinity is lower than that of CD16. These receptors are expressed on monocytes/macrophages, NK cells, granulocytes, mast cells, dendritic cells, and B cells. Their role is to mediate adaptive immune responses through binding the antibody-antigen immunocomplexes, but their effect on the particular cell differs according to the cell type.

Specificity : The rat monoclonal antibody 93 recognizes a common extracellular epitope of murine CD16 (FcgammaRIII) and CD32 (FcgammaRII), the low affinity receptors for IgG.

Product Info

Amount :	0.1 mg
Purification :	Purified by protein-A affinity chromatography
Content :	0.5 mg/ml Formulation : Phosphate buffered saline (PBS) solution with 15 mM sodium azide
Storage condition :	Store at 2-8°C. Do not freeze.

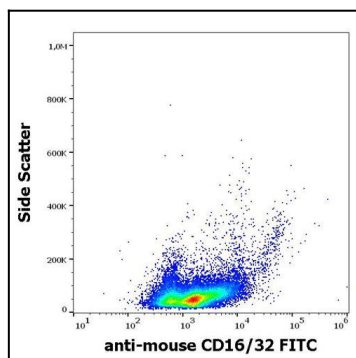


Figure 1 : Flow cytometry surface staining pattern of murine splenocyte suspension stained using anti-mouse CD16/32 (93) FITC antibody (concentration in sample 15 µg/ml).

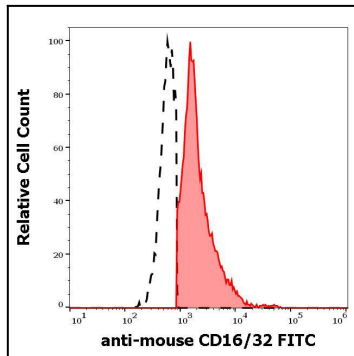


Figure 2 : Separation of murine CD16/32 positive cells (red-filled) from murine CD16/32 negative cells (black-dashed) in flow cytometry analysis (surface staining) of murine splenocyte suspension stained using anti-mouse CD16/32 (93) FITC antibody (concentration in sample 15 µg/ml).