

30-2619: Anti-Human CD231 PE (Clone : B2D)

| | |
|--------------------------------|---|
| Clonality : | Monoclonal |
| Clone Name : | B2D |
| Application : | FACS |
| Reactivity : | Human |
| Conjugate : | PE |
| Gene : | TSPAN7 |
| Gene ID : | 7102 |
| Alternative Name : | TSPAN7, TALLA-1, MXS1, MRX58, TM4SF2, tetraspanin 7 |
| Isotype : | Mouse IgG1 |
| Immunogen Information : | Human T-ALL cell line THP-6 |

Description

CD231 (TALLA-1, T-ALL-associated antigen 1), also known as tetraspanin 7, is a 150 kDa (under reducing conditions 32-45 kDa) transmembrane glycoprotein of tetraspanin family, expressed in T-type acute lymphoblastic leukemia, neuroblastoma, and neuronal tissue. Mutations of CD231 gene are associated with X-linked mental retardation, Huntington's chorea, and myotonic dystrophy. CD231 interacts with integrins and may have a role in the control of neurite outgrowth. Antibodies to CD231 are important for detection of T-ALL and are potential targets of its treatment.

Specificity : The mouse monoclonal antibody B2D recognizes an extracellular epitope of CD231 (TALLA-1, tetraspanin 7), a transmembrane glycoprotein expressed in neuronal tissue and T-ALL.

Product Info

| | |
|----------------------------|---|
| Amount : | 100 tests |
| Purification : | The purified antibody is conjugated with R-phycoerythrin (PE) under optimum conditions. The conjugate is purified by size-exclusion chromatography. |
| Content : | Formulation : Stabilizing phosphate buffered saline (PBS) solution containing 15 mM sodium azide |
| Storage condition : | Store in the dark at 2-8°C. Do not freeze. Avoid prolonged exposure to light. |

Application Note

Flow cytometry: The reagent is designed for analysis of human blood cells using 10 μ l reagent / 100 μ l of whole blood or 10⁶ cells in a suspension. The content of a vial (1 ml) is sufficient for 100 tests.

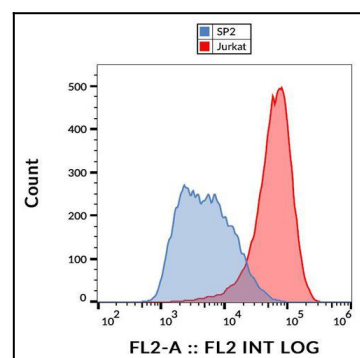


Figure 1 : Flow cytometry analysis (surface staining) of CD231 in JURKAT cells with anti-CD231 (B2D) PE.