

## 30-2616: Anti-Human CD231 Antibody (Clone : B2D)

<b>Clonality :</b>	Monoclonal
<b>Clone Name :</b>	B2D
<b>Application :</b>	FACS , IP, WB, IHC
<b>Reactivity :</b>	Human
<b>Gene :</b>	TSPAN7
<b>Gene ID :</b>	7102
<b>Format :</b>	Purified
<b>Alternative Name :</b>	TSPAN7, TALLA-1, MXS1, MRX58, TM4SF2, tetraspanin 7
<b>Isotype :</b>	Mouse IgG1
<b>Immunogen Information :</b>	Human T-ALL cell line THP-6

### Description

CD231 (TALLA-1, T-ALL-associated antigen 1), also known as tetraspanin 7, is a 150 kDa (under reducing conditions 32-45 kDa) transmembrane glycoprotein of tetraspanin family, expressed in T-type acute lymphoblastic leukemia, neuroblastoma, and neuronal tissue. Mutations of CD231 gene are associated with X-linked mental retardation, Huntington's chorea, and myotonic dystrophy. CD231 interacts with integrins and may have a role in the control of neurite outgrowth. Antibodies to CD231 are important for detection of T-ALL and are potential targets of its treatment.

Specificity : The mouse monoclonal antibody B2D recognizes an extracellular epitope of CD231 (TALLA-1, tetraspanin 7), a transmembrane glycoprotein expressed in neuronal tissue and T-ALL.

### Product Info

<b>Amount :</b>	0.1 mg
<b>Purification :</b>	Purified from cell culture supernatant by protein-A affinity chromatography
<b>Content :</b>	1 mg/ml Formulation : Phosphate buffered saline (PBS) solution with 15 mM sodium azide
<b>Storage condition :</b>	Store at 2-8°C. Do not freeze.

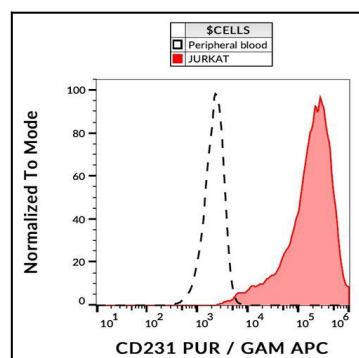


Figure 1 : Flow cytometry analysis (surface staining) of CD231 in JURKAT cells with anti-CD231 (B2D) purified, GAM-APC.