

## 30-2589: Anti-Human CD318 PE (Clone : CUB1)

<b>Clonality :</b>	Monoclonal
<b>Clone Name :</b>	CUB1
<b>Application :</b>	FACS
<b>Reactivity :</b>	Human
<b>Conjugate :</b>	PE
<b>Gene :</b>	CDCP1
<b>Gene ID :</b>	64866
<b>Alternative Name :</b>	CDCP1, SIMA135, TRASK, CUB domain containing protein 1
<b>Isotype :</b>	Mouse IgG2b
<b>Immunogen Information :</b>	NIH-3T3/CD318 cells

### Description

CD318 (CUB domain containing protein 1) is a complement domains-containing transmembrane glycoprotein, which takes part in early hematopoiesis. It is expressed on CD34+CD133+ bone marrow cells, keratinocytes, and in human colorectal and breast cancers. It is being used as a marker of mesenchymal stem-like cells, neural progenitor cells, and also as an independent marker for the diagnosis of myeloid leukemias.

Specificity : The mouse monoclonal antibody CUB1 recognizes an extracellular epitope of CD318, a type I transmembrane protein involved in early hematopoiesis.

### Product Info

<b>Amount :</b>	0.1 mg
<b>Purification :</b>	The purified antibody is conjugated with R-phycoerythrin (PE) under optimum conditions. The conjugate is purified by size-exclusion chromatography. 0.1 mg/ml
<b>Content :</b>	Formulation : Stabilizing phosphate buffered saline (PBS) solution containing 15 mM sodium azide
<b>Storage condition :</b>	Store in the dark at 2-8°C. Do not freeze. Avoid prolonged exposure to light.

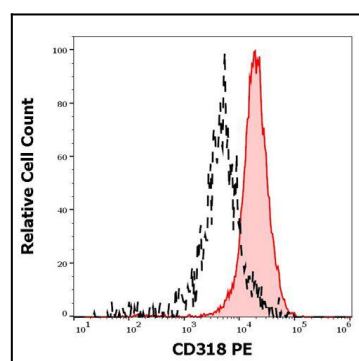


Figure 1 : Separation of HT-29 cells stained using anti-human CD318 (CUB1) PE antibody (concentration in sample 5 µg/ml, red-filled) from HT-29 cells stained using mouse IgG2b isotype control (MPC-11) PE antibody (concentration in sample 5 µg/ml, same as CD318 PE concentration, black-dashed) in flow cytometry analysis (surface staining) of HT-29 cell suspension.