

30-2588: Anti-Human CD318 FITC (Clone : CUB1)

Clonality :	Monoclonal
Clone Name :	CUB1
Application :	FACS
Reactivity :	Human
Conjugate :	FITC
Gene :	CDCP1
Gene ID :	64866
Alternative Name :	CDCP1, SIMA135, TRASK, CUB domain containing protein 1
Isotype :	Mouse IgG2b
Immunogen Information :	NIH-3T3/CD318 cells

Description

CD318 (CUB domain containing protein 1) is a complement domains-containing transmembrane glycoprotein, which takes part in early hematopoiesis. It is expressed on CD34+CD133+ bone marrow cells, keratinocytes, and in human colorectal and breast cancers. It is being used as a marker of mesenchymal stem-like cells, neural progenitor cells, and also as an independent marker for the diagnosis of myeloid leukemias.

Specificity : The mouse monoclonal antibody CUB1 recognizes an extracellular epitope of CD318, a type I transmembrane protein involved in early hematopoiesis.

Product Info

Amount :	0.1 mg
Purification :	The purified antibody is conjugated with fluorescein isothiocyanate (FITC) under optimum conditions. The conjugate is purified by size-exclusion chromatography.
Content :	0.1 mg/ml Formulation : Phosphate buffered saline (PBS) solution with 15 mM sodium azide
Storage condition :	Store in the dark at 2-8°C. Do not freeze. Avoid prolonged exposure to light.

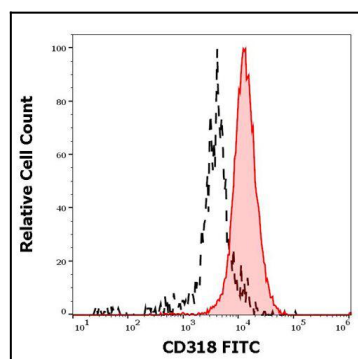


Figure 1 : Separation of HT-29 cells stained using anti-human CD318 (CUB1) FITC antibody (concentration in sample 5 µg/ml, red-filled) from HT-29 cells stained using mouse IgG2b isotype control (MPC-11) FITC antibody (concentration in sample 5 µg/ml, same as CD318 FITC concentration, black-dashed) in flow cytometry analysis (surface staining) of HT-29 cell suspension.