

30-2587: Anti-Human CD318 APC (Clone : CUB1)

Clonality :	Monoclonal
Clone Name :	CUB1
Application :	FACS
Reactivity :	Human
Conjugate :	APC
Gene :	CDCP1
Gene ID :	64866
Alternative Name :	CDCP1, SIMA135, TRASK, CUB domain containing protein 1
Isotype :	Mouse IgG2b
Immunogen Information :	NIH-3T3/CD318 cells

Description

CD318 (CUB domain containing protein 1) is a complement domains-containing transmembrane glycoprotein, which takes part in early hematopoiesis. It is expressed on CD34+CD133+ bone marrow cells, keratinocytes, and in human colorectal and breast cancers. It is being used as a marker of mesenchymal stem-like cells, neural progenitor cells, and also as an independent marker for the diagnosis of myeloid leukemias.

Specificity : The mouse monoclonal antibody CUB1 recognizes an extracellular epitope of CD318, a type I transmembrane protein involved in early hematopoiesis.

Product Info

Amount :	100 tests
Purification :	The purified antibody is conjugated with allophycocyanin (APC) under optimum conditions. The conjugate is purified by size-exclusion chromatography.
Content :	Formulation : Stabilizing phosphate buffered saline (PBS) solution containing 15 mM sodium azide
Storage condition :	Store in the dark at 2-8°C. Do not freeze. Avoid prolonged exposure to light.

Application Note

Flow cytometry: The reagent is designed for analysis of human blood cells using 10⁵ cells / 100 μl of whole blood or 10⁶ cells in a suspension. The content of a vial (1 ml) is sufficient for 100 tests.

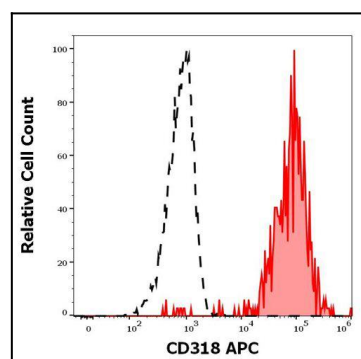


Figure 1 : Separation of HT-29 cells (red-filled) from human peripheral whole blood cells (black-dashed) in flow cytometry analysis (surface staining) stained using anti-human CD318 (CUB1) APC antibody (10 μl reagent per million cells in 100 μl of cell suspension).