

## 30-2571: Anti-Human CD369 Antibody (Clone : 15E2)

<b>Clonality :</b>	Monoclonal
<b>Clone Name :</b>	15E2
<b>Application :</b>	FACS , IHC(F)
<b>Reactivity :</b>	Human
<b>Gene :</b>	CLEC7A
<b>Gene ID :</b>	64581
<b>Format :</b>	Purified
<b>Alternative Name :</b>	Dectin-1, CLEC7A, BGR, CANDF4, SCARE2,C-type lectin domain containing 7A
<b>Isotype :</b>	Mouse IgG2a kappa
<b>Immunogen Information :</b>	Extracellular part of human CD369 with hIgG FC tag

### Description

CD369 (Dectin-1, beta-glucan receptor) is a 33 kDa type II transmembrane glycoprotein of lectin family, and serves as a part of innate immunity system by binding to beta-glucan polymers, which are typical for yeast and mycobacterial cell walls. CD369 is expressed predominantly on dendritic cells, but it can be detected also on monocytes, macrophages, mast cells, eosinophils, B cells, endothelial cells, and sometimes also on some T cell subsets.

Specificity : The mouse monoclonal antibody 15E2 recognizes an extracellular epitope LWEDGSTFSSN of human CD369 (Dectin-1), a 33 kDa transmembrane glycoprotein expressed predominantly on dendritic cells.

### Product Info

<b>Amount :</b>	0.1 mg
<b>Purification :</b>	Purified by protein-A affinity chromatography
<b>Content :</b>	1 mg/ml Formulation : Phosphate buffered saline (PBS) solution with 15 mM sodium azide
<b>Storage condition :</b>	Store at 2-8°C. Do not freeze.

### Application Note

Flow cytometry: Recommended dilution: 2-5  $\mu\text{g/ml}$ .

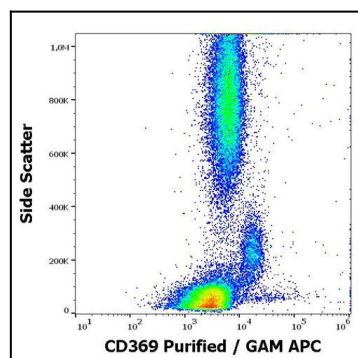


Figure 1 : Flow cytometry surface staining pattern of human peripheral whole blood stained using anti-human CD369 (15E2) purified antibody (concentration in sample 1,7  $\mu\text{g/ml}$ , GAM APC).

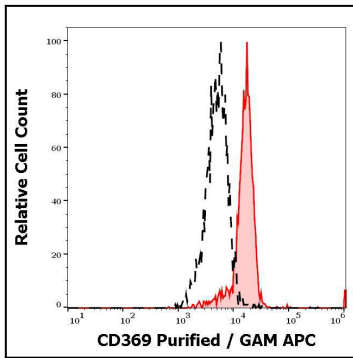


Figure 2 : Separation of monocytes stained anti-human CD369 (15E2) purified antibody (concentration in sample 1,7 µg/ml, GAM APC, red-filled) from monocytes unstained by primary antibody (GAM APC, black-dashed) in flow cytometry analysis (surface staining).