

30-2552: Anti-Human CD66c Antibody (Clone : B6.2)

Clonality :	Monoclonal
Clone Name :	B6.2
Application :	FACS , IP
Reactivity :	Human
Gene :	CEACAM6
Gene ID :	4680
Format :	Purified
Alternative Name :	CEAL, NCA, CEACAM6,CEA cell adhesion molecule 6
Isotype :	Mouse IgG1 kappa
Immunogen Information :	Extracts from human breast carcinoma cells

Description

CD66c is a GPI-anchored glycoprotein capable of homophilic adhesion and heterophilic binding to CD66a-e, CD62E, and galectins. It is expressed on granulocytes and epithelial cells, and has potential applications in the detection of sites of infection and inflammation.

Specificity : The mouse monoclonal antibody B6.2 recognizes a conformationally dependent epitope of native CD66c, a GPI-anchored extracellular glycoprotein expressed on granulocytes and epithelial cells.

Product Info

Amount :	0.1 mg
Purification :	Purified by protein-A affinity chromatography
Content :	1 mg/ml Formulation : Phosphate buffered saline (PBS) solution with 15 mM sodium azide
Storage condition :	Store at 2-8°C. Do not freeze.

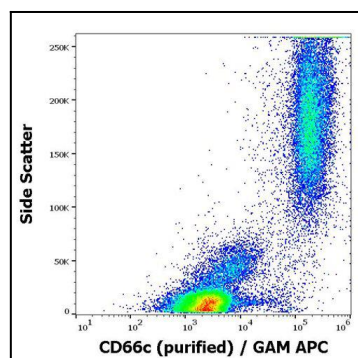


Figure 1 : Flow cytometry surface staining pattern of human peripheral whole blood stained using anti-human CD66c (B6.2) purified antibody (concentration in sample 3 µg/ml, GAM APC).

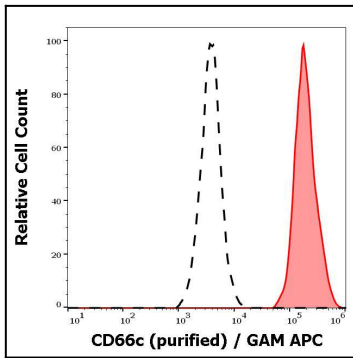


Figure 2 : Separation of neutrophil granulocytes stained anti-human CD66c (B6.2) purified antibody (concentration in sample 3 µg/ml, GAM APC, red-filled) from neutrophil granulocytes unstained by primary antibody (GAM APC, black-dashed) in flow cytometry analysis (surface staining).