

30-2550: Anti-Human CD68 APC (Clone : Y1/82A)

Clonality :	Monoclonal
Clone Name :	Y1/82A
Application :	FACS
Reactivity :	Human
Conjugate :	APC
Gene :	CD68
Gene ID :	968
Alternative Name :	GP110, LAMP4, SCARD1, CD68 molecule
Isotype :	Mouse IgG2a
Immunogen Information :	Lysosomal contents of lung macrophages

Description

CD68 (also known as LAMP4 or SCARD1) is a 110 kDa type I transmembrane glycoprotein of the lysosomal/endosomal-associated membrane glycoprotein (LAMP) family and the scavenger receptor family. Although CD68 primarily localizes to lysosomes and endosomes, its fraction circulates to the cell surface. By the heavily glycosylated extracellular domain CD68 binds to tissue- and organ-specific lectins or selectins. It is expressed mainly in cytoplasmic granules of monocytes/macrophages, granulocytes, and dendritic cells, but also e.g. in a proportion of epithelial tumours (diagnosis of poorly differentiated neoplasms).

Specificity : The mouse monoclonal antibody Y1/82A recognizes CD68 (LAMP4), a 110 kDa glycoprotein expressed mainly in cytoplasmic granules of monocytes/macrophages, granulocytes, and dendritic cells.

Product Info

Amount :	100 tests
Purification :	The purified antibody is conjugated with allophycocyanin (APC) under optimum conditions. The conjugate is purified by size-exclusion chromatography.
Content :	Formulation : Stabilizing phosphate buffered saline (PBS) solution containing 15 mM sodium azide
Storage condition :	Store in the dark at 2-8°C. Do not freeze. Avoid prolonged exposure to light.

Application Note

Flow cytometry: The reagent is designed for analysis of human blood cells using 10 μ l reagent / 100 μ l of whole blood or 10⁶ cells in a suspension. The content of a vial (1 ml) is sufficient for 100 tests.

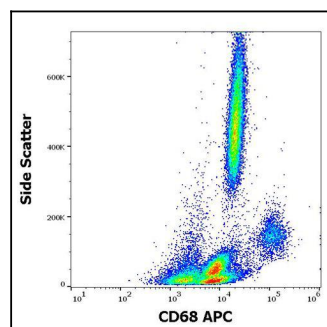


Figure 1 : Flow cytometry surface staining pattern of human peripheral whole blood stained using anti-human CD68 (Y1/82A) APC antibody (10 μ l reagent / 100 μ l of peripheral whole blood).

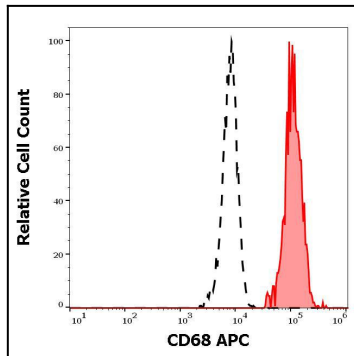


Figure 2 : Separation of human monocytes (red-filled) from human CD68 negative lymphocytes (black-dashed) in flow cytometry analysis (surface staining) of human peripheral whole blood stained using anti-human CD68 (Y1/82A) APC antibody (10 μ l reagent / 100 μ l of peripheral whole blood).