

## 36-1700: Monoclonal Antibody to CD43 (T-Cell Marker)(Clone : SPM503)

<b>Clonality :</b>	Monoclonal
<b>Clone Name :</b>	SPM503
<b>Application :</b>	FACS,IF,WB,IHC
<b>Reactivity :</b>	Human
<b>Gene :</b>	SPN
<b>Gene ID :</b>	6693
<b>Uniprot ID :</b>	P16150
<b>Format :</b>	Purified
<b>Alternative Name :</b>	SPN, CD43
<b>Isotype :</b>	Mouse IgG1, kappa
<b>Immunogen Information :</b>	Myeloblastic KG1 cells

### Description

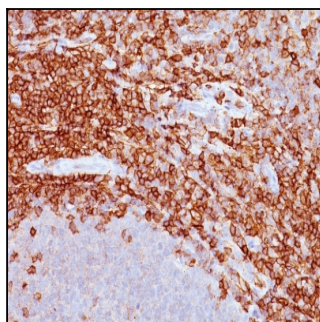
It recognizes a cell surface glycoprotein of 95/115/135kDa (depending upon the extent of glycosylation), identified as CD43. 70-90% of T-cell lymphomas and from 22-37% of B-cell lymphomas express CD43. No reactivity has been observed with reactive B-cells. So a B-lineage population that co-expresses CD43 is highly likely to be a malignant lymphoma, especially a low-grade lymphoma, rather than a reactive B-cell population. When CD43 antibody is used in combination with anti-CD20, effective immunophenotyping of the lymphomas in formalin-fixed tissues can be obtained. Co-staining of a lymphoid infiltrate with anti-CD20 and anti-CD43 argues against a reactive process and favors a diagnosis of lymphoma.

### Product Info

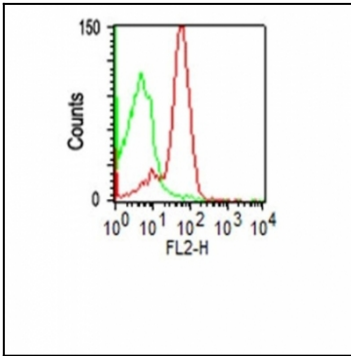
<b>Amount :</b>	100 µg
<b>Purification :</b>	Affinity Chromatography
<b>Content :</b>	100 µg in 500 µl PBS containing 0.05% BSA and 0.05% sodium azide. Sodium azide is highly toxic.
<b>Storage condition :</b>	Store the antibody at 4°C; stable for 6 months. For long-term storage; store at -20°C. Avoid repeated freeze and thaw cycles.

### Application Note

Flow Cytometry (1-2ug/million cells); Immunofluorescence (1-2ug/ml); Western Blot (1-2ug/ml); Immunohistochemistry (Formalin-fixed) (1-2ug/ml for 30 minutes at RT)(Staining of formalin-fixed tissues requires heating tissue sections in 10mM Tris with 1mM EDTA, pH 9.0, for 45 min at 95 °C followed by cooling at RT for 20 minutes)



Formalin-fixed, paraffin-embedded human Spleen stained with CD43 Monoclonal Antibody (SPM503).



Flow Cytometry of PBMC using CD43 Monoclonal Antibody (SPM503) (red) or isotype control (green)