

### 30-2498: Anti-p21Waf1 Antibody (Clone : WA-1)

<b>Clonality :</b>	Monoclonal
<b>Clone Name :</b>	WA-1
<b>Application :</b>	IHC(P), ICC, ELISA
<b>Reactivity :</b>	Human
<b>Gene :</b>	CDKN1A
<b>Gene ID :</b>	1026
<b>Format :</b>	Purified
<b>Alternative Name :</b>	CDKN1A, CIP1, CAP20, cyclin dependent kinase inhibitor 1A
<b>Isotype :</b>	Mouse IgG1
<b>Immunogen Information :</b>	Human p21 protein

#### Description

The tumour suppressor p21Waf1 (Wild-type p53-Activated Fragment 1; also known as Cip1, Cdk interacting protein, or SDI 1) is a cyclin-dependent kinase (Cdk) inhibitor, which is expressed by involvement of p53, Egr-1, AP2, STATs or other transcription factors upon various stimuli resulting in cell cycle arrest. Through its N-terminal domain p21Waf1 inhibits Cdk activity, whereas through the C-terminal domain it inhibits the activity of PCNA (proliferating cell nuclear antigen) to activate DNA replication. Cytosolic location of p21 counteracts its inhibitory activities.

Specificity : The antibody WA-1 reacts with p21 protein (Waf1, Cip1, SDI 1; intracellular antigen), a 21 kDa tumour suppressor, which inhibits the activity of cyclin-dependent family kinases and of proliferating cell nuclear antigen.

#### Product Info

<b>Amount :</b>	0.1 mg
<b>Purification :</b>	Purified by protein-A affinity chromatography
<b>Content :</b>	1 mg/ml Formulation : Phosphate buffered saline (PBS) solution with 15 mM sodium azide
<b>Storage condition :</b>	Store at 2-8°C. Do not freeze.

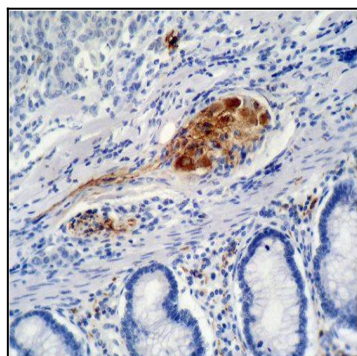


Figure 1 : Immunohistochemistry staining of colon carcinoma (paraffin-embedded sections) with anti-p21 (WA-1).

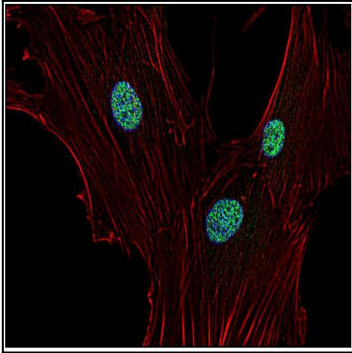


Figure 2 : Immunocytochemistry staining of p21 in human primary fibroblasts using anti-p21 (WA-1; green). Actin cytoskeleton decorated by phalloidin (red) and cell nuclei stained with DAPI (blue).