

30-2493: Anti-Human SUSD2 Antibody (Clone : W5C5)

Clonality :	Monoclonal
Clone Name :	W5C5
Application :	ICC
Reactivity :	Human
Gene :	SUSD2
Gene ID :	56241
Format :	Purified
Alternative Name :	sushi domain containing 2
Isotype :	Mouse IgG1
Immunogen Information :	WERI-RB-1 retinoblastoma cells

Description

SUSD2 (sushi domain containing protein 2) is a type I transmembrane protein, that serves as an important marker of bone marrow-derived mesenchymal stem-like cells (bone marrow stromal cells). These pluripotent cells are important for techniques of autologous cell therapy, and can be collected from e.g. endometrium, or palatine tonsil. SUSD2 seems to be a tumor supresor, and is down-regulated in colon cancer tissues, whereas it is highly expressed e.g. in breast cancer.

Specificity : The mouse monoclonal antibody W5C5 recognizes an extracellular epitope of SUSD2, a type I transmembrane protein expressed on mesenchymal stem-like cells. This antibody selectively binds to a MSCs in both bone marrow and endometrium or tonsil, and can be used for their identification and isolation.

Product Info

Amount :	0.1 mg
Purification :	Purified by protein-A affinity chromatography
Content :	1 mg/ml Formulation : Phosphate buffered saline (PBS) solution with 15 mM sodium azide
Storage condition :	Store at 2-8°C. Do not freeze.

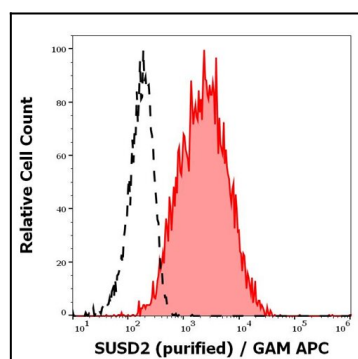


Figure 1: Separation of MCF-7 cells stained using anti-human SUS D2 (W5C5) purified antibody (red-filled) from MCF-7 cells unstained by primary antibody (GAM APC, black-dashed) in flow cytometry analysis (surface staining).