

### 30-2491: Anti-Rat TCR alpha/beta Low Endotoxin Antibody (Clone : R73)

<b>Clonality :</b>	Monoclonal
<b>Clone Name :</b>	R73
<b>Application :</b>	WB
<b>Reactivity :</b>	Rat
<b>Format :</b>	Low Endotoxin
<b>Alternative Name :</b>	TCRA/B
<b>Isotype :</b>	Mouse IgG1 kappa
<b>Immunogen Information :</b>	Rat T blasts and erythrocytes

#### Description

The antigen-specific T cell receptor (TCR) is composed of either alpha and beta subunit, or gamma and delta subunit. Majority of T cells present in the blood, lymph and secondary lymphoid organs express TCR alpha/beta heterodimers, whereas the T cells expressing TCR gamma/delta heterodimers are localized mainly in epithelial tissues and at the sites of infection. The subunits of TCR heterodimers are covalently bonded and in the endoplasmic reticulum they associate with CD3 subunits to form functional TCR-CD3 complex. Lack of expression of any of the chains is sufficient to stop cell surface expression.

Specificity : The mouse monoclonal R73 recognizes an extracellular epitope TCR alpha/beta, the dominant subtype of T cell receptor expressed in peripheral blood.

#### Product Info

<b>Amount :</b>	0.1 mg
<b>Purification :</b>	Purified by protein-A affinity chromatography
	1 mg/ml
<b>Content :</b>	Formulation : Low endotoxin azide free phosphate buffered saline (PBS) solution, 0.2 $\mu$ m filter sterilized. Endotoxin level is less than 0.01 EU/ $\mu$ g of the protein, as determined by the LAL test.
<b>Storage condition :</b>	Store at 2-8°C. Do not freeze.

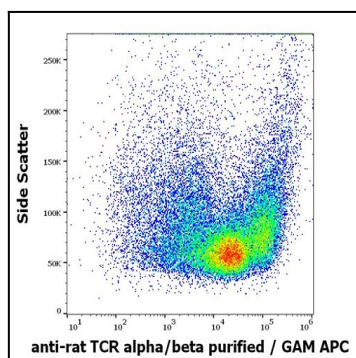


Figure 1: Flow cytometry surface staining pattern of rat thymocyte suspension stained using anti-rat TCR alpha/beta (R73) purified antibody GAM APC

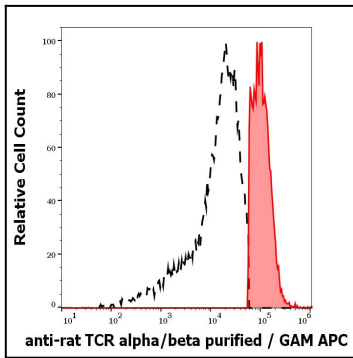


Figure 2: Separation of rat TCR alpha/beta positive thymocytes (red-filled) from TCR alpha/beta negative thymocytes (black-dashed) in flow cytometry analysis (surface staining) of rat thymocyte suspension stained using anti-rat TCR alpha/beta (R73) purified antibody GAM APC.