

## 36-1693: Monoclonal Antibody to Fascin-1 (Reed-Sternberg Cell Marker)(Clone : FSCN1/418)

<b>Clonality :</b>	Monoclonal
<b>Clone Name :</b>	FSCN1/418
<b>Application :</b>	WB,FACS,IF,IHC
<b>Reactivity :</b>	Human, Rat
<b>Gene :</b>	FSCN1
<b>Gene ID :</b>	6624
<b>Uniprot ID :</b>	Q16658
<b>Format :</b>	Purified
<b>Alternative Name :</b>	FSCN1,FAN1,HSN,SNL
<b>Isotype :</b>	Mouse IgG2b, kappa
<b>Immunogen Information :</b>	Full length recombinant human FSCN1 protein

### Description

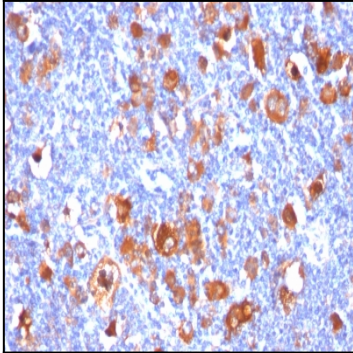
Recognizes a protein of 55kDa, which is identified as fascin-1. Its actin binding ability is regulated by phosphorylation. Antibody to fascin-1 is a very sensitive marker for Reed-Sternberg cells and variants in nodular sclerosis, mixed cellularity, and lymphocyte depletion Hodgkin s disease. It is uniformly negative in lymphoid cells, plasma cells, and myeloid cells. Fascin-1 is also expressed in dendritic cells. This marker may be helpful to distinguish between Hodgkin lymphoma and non-Hodgkin lymphoma in difficult cases. Also, the lack of expression of fascin-1 in the neoplastic follicles in follicular lymphoma may be helpful in distinguishing these lymphomas from reactive follicular hyperplasia in which the number of follicular dendritic cells is normal or increased. Antibody to fascin-1 has been suggested as a prognostic marker in neuroendocrine neoplasms of the lung as well as in ovarian cancer. Fascin-1 expression may be induced by Epstein-Barr virus (EBV) infection of B cells with the possibility that viral induction of fascin in lymphoid or other cell types must also be considered in EBV-positive cases.

### Product Info

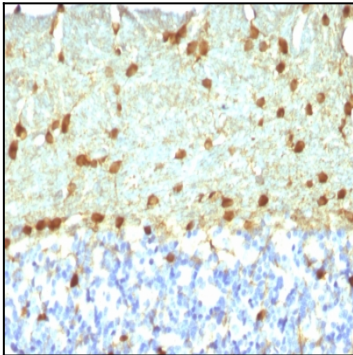
<b>Amount :</b>	100 µg
<b>Purification :</b>	Affinity Chromatography
<b>Content :</b>	100 µg in 500 µl PBS containing 0.05% BSA and 0.05% sodium azide. Sodium azide is highly toxic.
<b>Storage condition :</b>	Store the antibody at 4°C; stable for 6 months. For long-term storage; store at -20°C. Avoid repeated freeze and thaw cycles.

### Application Note

Western Blot (1-2ug/ml); Flow Cytometry (1-2ug/million cells); Immunofluorescence (1-2ug/ml); Immunohistochemistry (Formalin-fixed) (1-2ug/ml for 30 minutes at RT)(Staining of formalin-fixed tissues requires heating tissue sections in 1mM EDTA, pH 8.0, for 45 min at 95&degC followed by cooling at RT for 20 minutes)



Formalin-fixed, paraffin-embedded human Hodgkin's Lymphoma stained with Fascin-1 Monoclonal Antibody (FSCN1/418)



Formalin-fixed, paraffin-embedded Rat Brain stained with Fascin-1 Monoclonal Antibody (FSCN1/418)