

## 32-17139: Recombinant human PMEL Protein with C-terminal Human Fc tag

**Alternative Name :** D12S53E, gp100, ME20, ME20-M, ME20M, P1, P100, PMEL17, SI, SIL, SILV

### Description

Expression Host : HEK293

The protein has a predicted molecular mass of 46.2 kDa after removal of the signal peptide. The apparent molecular mass of PMEL-hFc is approximately 130-250 kDa due to glycosylation.

This gene encodes a melanocyte-specific type I transmembrane glycoprotein. The encoded protein is enriched in melanosomes, which are the melanin-producing organelles in melanocytes, and plays an essential role in the structural organization of premelanosomes. This protein is involved in generating internal matrix fibers that define the transition from Stage I to Stage II melanosomes. This protein undergoes a complex pattern of posttranslational processing and modification that is essential to the proper functioning of the protein. A secreted form of this protein that is released by proteolytic ectodomain shedding may be used as a melanoma-specific serum marker. Alternate splicing results in multiple transcript variants.

### Product Info

<b>Amount :</b>	50 µg
<b>Purification :</b>	The purity of the protein is greater than 95% as determined by SDS-PAGE and Coomassie blue staining.
<b>Content :</b>	Lyophilized from sterile PBS, pH 7.4. Normally 5 % - 8% trehalose is added as protectants before lyophilization.
<b>Storage condition :</b>	Store at -80°C for 12 months (Avoid repeated freezing and thawing)

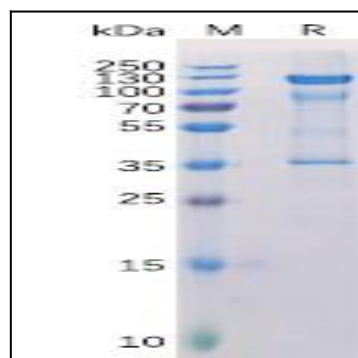


Figure 1. Human PMEL Protein, hFc Tag on SDS-PAGE under reducing condition.