

32-17137: Recombinant Human B7-H6 Protein with C-terminal 6 \times His tag

Alternative Name : B7-H6,NCR3LG1,B7 Homolog 6

Description

Expression Host : HEK293

The protein has a predicted molecular mass of 27.5 kDa after removal of the signal peptide. The apparent molecular mass of B7-H6-His is approximately 35-55 kDa due to glycosylation.

B7H6 belongs to the B7 family (see MIM 605402) and is selectively expressed on tumor cells. Interaction of B7H6 with NKp30 (NCR3; MIM 611550) results in natural killer (NK) cell activation and cytotoxicity.

Product Info

Amount :	50 μ g
Purification :	The purity of the protein is greater than 95% as determined by SDS-PAGE and Coomassie blue staining.
Content :	Lyophilized from sterile PBS, pH 7.4. Normally 5 % - 8 % trehalose is added as protectants before lyophilization.
Storage condition :	Store at -80°C for 12 months (Avoid repeated freezing and thawing)

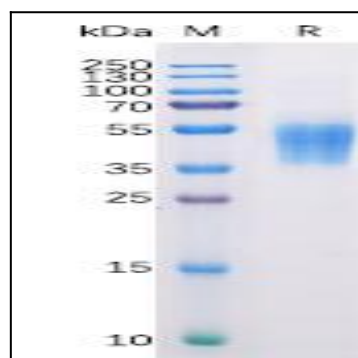


Figure 1. Human B7-H6 Protein, His Tag on SDS-PAGE under reducing condition.

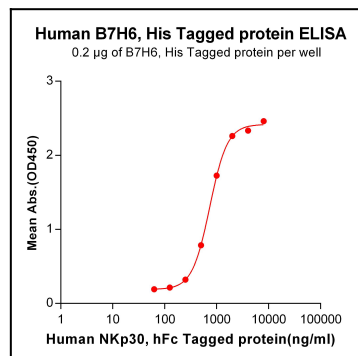


Figure 2. ELISA plate pre-coated by 2 μ g/ml (100 μ l/well) Human B7H6, His tagged protein can bind Human NKp30, hFc tagged protein in a linear range of 250-2000 ng/ml.