

32-17118: Recombinant human EGFR Protein with C-6 \AA —His tag

Alternative Name : EGFR,ERBB,ERBB1,HER1,PIG61,mENA

Description

Expression Host : HEK293

The protein has a predicted molecular mass of 69.4 kDa after removal of the signal peptide. The apparent molecular mass of EGFR-His is approximately 100-130 kDa due to glycosylation.

The protein encoded by this gene is a transmembrane glycoprotein that is a member of the protein kinase superfamily. This protein is a receptor for members of the epidermal growth factor family. EGFR is a cell surface protein that binds to epidermal growth factor. Binding of the protein to a ligand induces receptor dimerization and tyrosine autophosphorylation and leads to cell proliferation. Mutations in this gene are associated with lung cancer.

Product Info

Amount :	50 μ g
Purification :	The purity of the protein is greater than 95% as determined by SDS-PAGE and Coomassie blue staining.
Content :	Lyophilized from sterile PBS, pH 7.4. Normally 5 % - 8 % trehalose is added as protectants before lyophilization.
Storage condition :	Store at -80°C for 12 months (Avoid repeated freezing and thawing)

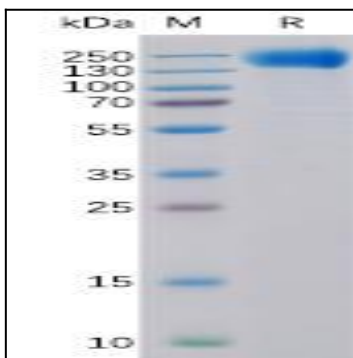


Figure 1. Human EGFR Protein, His Tag on SDS-PAGE under reducing condition.

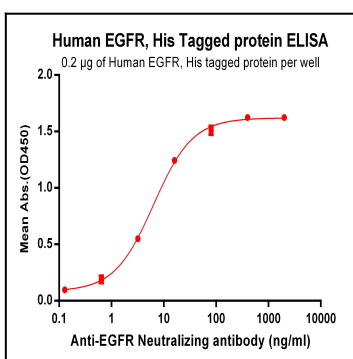


Figure 2. ELISA plate pre-coated by 2 μ g/ml (100 μ l/well) Human EGFR, His tagged protein can bind Anti-EGFR Antibody in a linear range of 0.64-80.0 ng/ml.