

## 32-17115: Recombinant human CLEC12A Protein with C-6Å—His tag

**Alternative Name :** CLEC12A,MICL,CLL-1,CLL1,DCAL2,DCAL-2,CD371

### Description

Expression Host : HEK293

The protein has a predicted molecular mass of 24.6 kDa after removal of the signal peptide. The apparent molecular mass of CLEC12A-His is approximately 35-55 kDa due to glycosylation.

This gene encodes a member of the C-type lectin/C-type lectin-like domain (CTL/CTLD) superfamily. Members of this family share a common protein fold and have diverse functions, such as cell adhesion, cell-cell signaling, glycoprotein turnover, and roles in inflammation and immune response. The protein encoded by this gene is a negative regulator of granulocyte and monocyte function. Several alternatively spliced transcript variants of this gene have been described, but the full-length nature of some of these variants has not been determined. This gene is closely linked to other CTL/CTLD superfamily members in the natural killer gene complex region on chromosome 12p13.

### Product Info

<b>Amount :</b>	50 µg
<b>Purification :</b>	The purity of the protein is greater than 95% as determined by SDS-PAGE and Coomassie blue staining.
<b>Content :</b>	Lyophilized from sterile PBS, pH 7.4. Normally 5 % - 8 % trehalose is added as protectants before lyophilization.
<b>Storage condition :</b>	Store at -80°C for 12 months (Avoid repeated freezing and thawing)

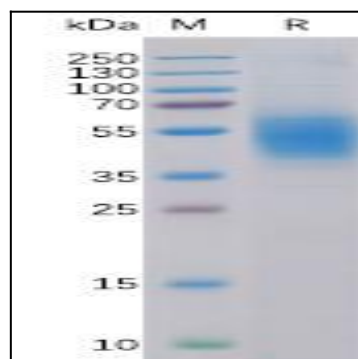


Figure 1. Human CLEC12A Protein, His Tag on SDS-PAGE under reducing condition.