

32-17072: Recombinant human SIGLEC15 protein with C-terminal mouse Fc and 6 \times His tag

Alternative Name : CD33 antigen-like 3,SIGLEC-15,CD33L3,sialic acid-binding Ig-like lectin 15,Siglec15,Siglec-15

Description

Expression Host : HEK293

The protein has a predicted molecular mass of 53.6 kDa after removal of the signal peptide. The apparent molecular mass of SIGLEC15-mFc-His is approximately 55-70 kDa due to glycosylation.

SIGLEC15 (Sialic Acid Binding Ig Like Lectin 15) is a Protein Coding gene. Diseases associated with SIGLEC15 include Osteoporosis, Juvenile and Osteoporosis. Among its related pathways are Innate Immune System and RET signaling. An important paralog of this gene is SIGLEC1.

Product Info

Amount :	50 μ g
Purification :	The purity of the protein is greater than 95% as determined by SDS-PAGE and Coomassie blue staining.
Content :	Lyophilized from sterile PBS, pH 7.4. Normally 5 % - 8 % trehalose is added as protectants before lyophilization.
Storage condition :	Store at -80°C for 12 months (Avoid repeated freezing and thawing)

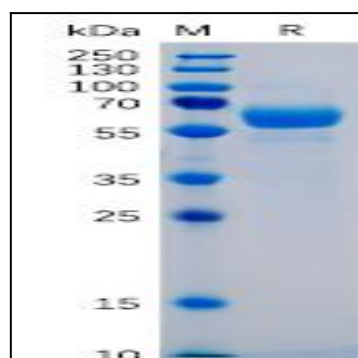


Figure 1. Human SIGLEC15 Protein, mFc-His Tag on SDS-PAGE under reducing condition.