

32-17069: Recombinant Human SIGLEC10 protein with C-terminal 6Å—His tag

Alternative Name : SIGLEC10, Siglec-10, SLG2, PRO940, MGC126774

Description

Expression Host : HEK293

The protein has a predicted molecular mass of 59.0 kDa after removal of the signal peptide. The apparent molecular mass of SIGLEC10-His is approximately 70-100 kDa due to glycosylation.

SIGLECs are members of the immunoglobulin superfamily that are expressed on the cell surface. Most SIGLECs have 1 or more cytoplasmic immune receptor tyrosine-based inhibitory motifs, or ITIMs. SIGLECs are typically expressed on cells of the innate immune system, with the exception of the B-cell expressed SIGLEC6 (MIM 604405).

Product Info

Amount :	50 µg
Purification :	The purity of the protein is greater than 95% as determined by SDS-PAGE and Coomassie blue staining.
Content :	Lyophilized from sterile PBS, pH 7.4. Normally 5 % - 8 % trehalose is added as protectants before lyophilization.
Storage condition :	Store at -80°C for 12 months (Avoid repeated freezing and thawing)

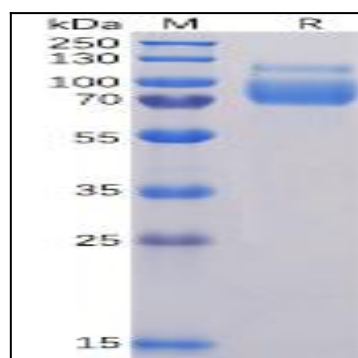


Figure 1. Human SIGLEC10 Protein, His Tag on SDS-PAGE under reducing condition.