

## 32-17044: Recombinant human DNAM-1 protein with C-terminal mouse Fc and 6Å—His tag

**Alternative Name :** DNAM1, CD226, PTA1

### Description

Expression Host : HEK293

The protein has a predicted molecular mass of 53.5 kDa after removal of the signal peptide.

This gene encodes a glycoprotein expressed on the surface of NK cells, platelets, monocytes and a subset of T cells. It is a member of the Ig-superfamily containing 2 Ig-like domains of the V-set. The protein mediates cellular adhesion of platelets and megakaryocytic cells to vascular endothelial cells. The protein also plays a role in megakaryocytic cell maturation. Alternative splicing results in multiple transcript variants.

### Product Info

<b>Amount :</b>	50 µg
<b>Purification :</b>	The purity of the protein is greater than 95% as determined by SDS-PAGE and Coomassie blue staining.
<b>Content :</b>	Lyophilized from sterile PBS, pH 7.4. Normally 5 % - 8 % trehalose is added as protectants before lyophilization.
<b>Storage condition :</b>	Store at -80°C for 12 months (Avoid repeated freezing and thawing)

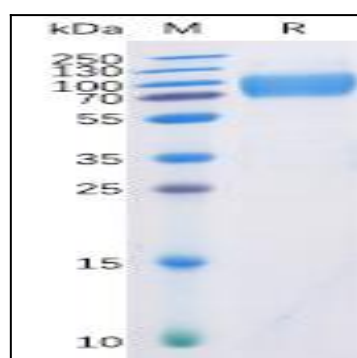


Figure 1. Human DNAM-1 Protein, mFc-His Tag on SDS-PAGE under reducing condition.

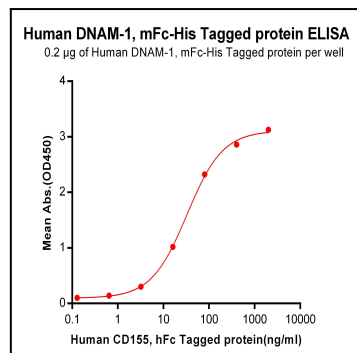


Figure 2. ELISA plate pre-coated by 2 µg/ml (100 µl/well) Human DNAM-1, mFc-His tagged protein can bind Human CD155, hFc Tagged protein in a linear range of 0.128-32.88 ng/ml.