

## 32-17043: Recombinant human BTLA protein with C-terminal mouse Fc and 6 $\times$ A—His tag

**Alternative Name :** BTLA, CD272

### Description

Expression Host : HEK293

The protein has a predicted molecular mass of 41.3 kDa after removal of the signal peptide.

This gene encodes a member of the immunoglobulin superfamily. The encoded protein contains a single immunoglobulin (Ig) domain and is a receptor that relays inhibitory signals to suppress the immune response. Alternative splicing results in multiple transcript variants. Polymorphisms in this gene have been associated with an increased risk of rheumatoid arthritis.

### Product Info

<b>Amount :</b>	50 $\mu$ g
<b>Purification :</b>	The purity of the protein is greater than 95% as determined by SDS-PAGE and Coomassie blue staining.
<b>Content :</b>	Lyophilized from sterile PBS, pH 7.4. Normally 5 % - 8 % trehalose is added as protectants before lyophilization.
<b>Storage condition :</b>	Store at -80°C for 12 months (Avoid repeated freezing and thawing)

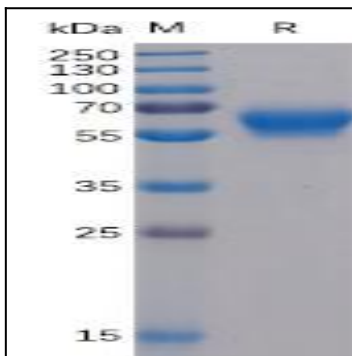


Figure 1. Human BTLA Protein, mFc-His Tag on SDS-PAGE under reducing condition.

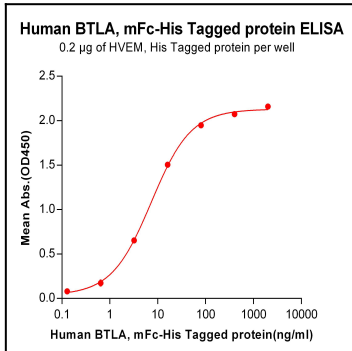


Figure 2. ELISA plate pre-coated by 2  $\mu$ g/ml (100  $\mu$ l/well) Human HVEM, His tagged protein can bind Human BTLA,mFc-His tagged protein in a linear range of 0.64-80 ng/ml.