

## 32-17031: Recombinant human MSLN(296-580) protein with C-terminal mouse Fc and 6 $\times$ His tag

**Alternative Name :** MSLN, Mesothelin, MPF

### Description

Expression Host : HEK293

The protein has a predicted molecular mass of 59.3 kDa after removal of the signal peptide.

This gene encodes a preproprotein that is proteolytically processed to generate two protein products, megakaryocyte potentiating factor and mesothelin. Megakaryocyte potentiating factor functions as a cytokine that can stimulate colony formation of bone marrow megakaryocytes. Mesothelin is a glycosylphosphatidylinositol-anchored cell-surface protein that may function as a cell adhesion protein. This protein is overexpressed in epithelial mesotheliomas, ovarian cancers and in specific squamous cell carcinomas. Alternative splicing results in multiple transcript variants, at least one of which encodes an isoform that is proteolytically processed.

### Product Info

<b>Amount :</b>	50 $\mu$ g
<b>Purification :</b>	The purity of the protein is greater than 95% as determined by SDS-PAGE and Coomassie blue staining.
<b>Content :</b>	Lyophilized from sterile PBS, pH 7.4. Normally 5 % - 8 % trehalose is added as protectants before lyophilization.
<b>Storage condition :</b>	Store at -80°C for 12 months (Avoid repeated freezing and thawing)

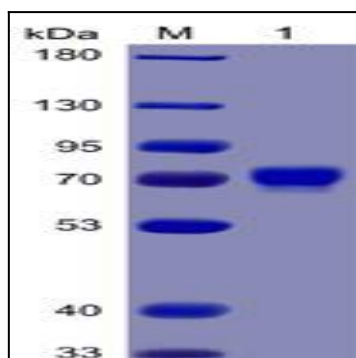


Figure 1. Human Mesothelin(296-580) Protein, mFc-His Tag on SDS-PAGE under reducing condition.

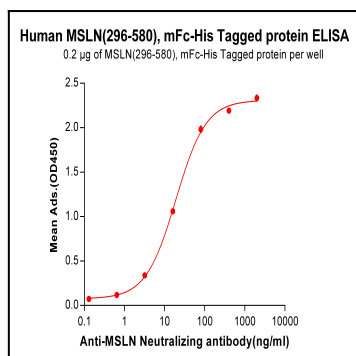


Figure 2. ELISA plate pre-coated by 2  $\mu$ g/ml (100  $\mu$ l/well) Human Mesothelin, mFc-His tagged protein can bind Anti-Mesothelin Neutralizing antibody in a linear range of 3.2-80.0 ng/ml.