

## 32-17017: Recombinant human CTLA-4 protein with C-terminal mouse Fc and 6 $\times$ His tag

**Alternative Name :** CTLA4, CD152

### Description

Expression Host : HEK293

The protein has a predicted molecular mass of 54 kDa after removal of the signal peptide.

This gene is a member of the immunoglobulin superfamily and encodes a protein which transmits an inhibitory signal to T cells. The protein contains a V domain, a transmembrane domain, and a cytoplasmic tail. Alternate transcriptional splice variants, encoding different isoforms, have been characterized. The membrane-bound isoform functions as a homodimer interconnected by a disulfide bond, while the soluble isoform functions as a monomer. Mutations in this gene have been associated with insulin-dependent diabetes mellitus, Graves disease, Hashimoto thyroiditis, celiac disease, systemic lupus erythematosus, thyroid-associated orbitopathy, and other autoimmune diseases.

### Product Info

<b>Amount :</b>	50 $\mu$ g
<b>Purification :</b>	The purity of the protein is greater than 95% as determined by SDS-PAGE and Coomassie blue staining.
<b>Content :</b>	Lyophilized from sterile PBS, pH 7.4. Normally 5 % - 8 % trehalose is added as protectants before lyophilization.
<b>Storage condition :</b>	Store at -80°C for 12 months (Avoid repeated freezing and thawing)

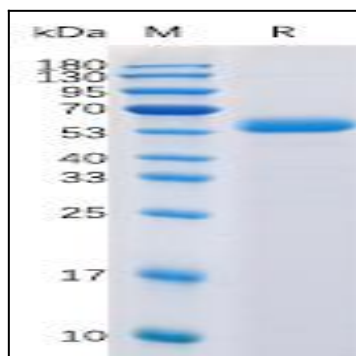


Figure 1. Human CTLA-4 Protein, mFc-His Tag on SDS-PAGE under reducing condition.

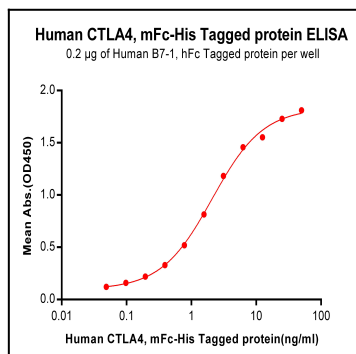


Figure 2. ELISA plate pre-coated by 2  $\mu$ g/ml (100  $\mu$ l/well) Human B7-1, hFc tagged protein can bind Human CTLA4, mFc-His tagged protein in a linear range of 0.048-2.094 ng/ml.

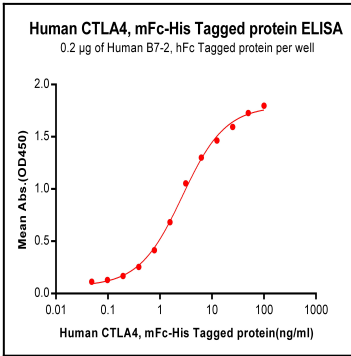


Figure 3. ELISA plate pre-coated by 2 µg/ml (100 µl/well) Human B7-2, hFc tagged protein can bind Human CTLA4, mFc-His tagged protein in a linear range of 0.048-2.694 ng/ml.

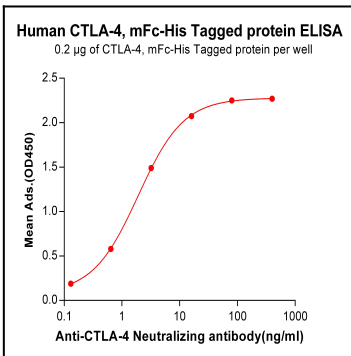


Figure 4. ELISA plate pre-coated by 2 µg/ml (100 µl/well) Human CTLA-4, mFc-His tagged protein can bind Anti-CTLA-4 Neutralizing antibody in a linear range of 0.13-16.0 ng/ml.

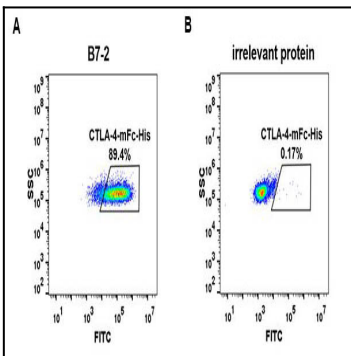


Figure 5. HEK293 cell line transfected with irrelevant protein (B) and human B7-2 (A) were surface stained with Human CTLA4, mFc-His tagged protein 1µg/ml followed by Alexa 488-conjugated anti-mouse IgG secondary antibody.