

## 12-9054: Anti-4-1BB Ligand antibody(DM68), Rabbit mAb

<b>Clonality :</b>	Monoclonal
<b>Clone Name :</b>	DM68
<b>Application :</b>	ELISA,FACS
<b>Reactivity :</b>	Human
<b>Alternative Name :</b>	4-1BB Ligand,TNFSF9,CD137L
<b>Isotype :</b>	Rabbit IgG
<b>Immunogen Information :</b>	Recombinant human 4-1BB Ligand (Pro52-Glu254) produced by using human HEK293 cells

### Description

The protein encoded by this gene is a cytokine that belongs to the tumor necrosis factor (TNF) ligand family. This transmembrane cytokine is a bidirectional signal transducer that acts as a ligand for TNFRSF9/4-1BB, which is a costimulatory receptor molecule in T lymphocytes. This cytokine and its receptor are involved in the antigen presentation process and in the generation of cytotoxic T cells. The receptor TNFRSF9/4-1BB is absent from resting T lymphocytes but rapidly expressed upon antigenic stimulation. The ligand encoded by this gene, TNFSF9/4-1BBL, has been shown to reactivate anergic T lymphocytes in addition to promoting T lymphocyte proliferation. This cytokine has also been shown to be required for the optimal CD8 responses in CD8 T cells. This cytokine is expressed in carcinoma cell lines, and is thought to be involved in T cell-tumor cell interaction.

### Product Info

<b>Amount :</b>	100 µg
<b>Purification :</b>	Purified from cell culture supernatant by affinity chromatography
<b>Content :</b>	Preservative: 0.1% Procline 300 Constituents: 50% Glycerol; PBS,pH 7.4; 0.1% BSA Not Sterile
<b>Storage condition :</b>	Store at -20°C for 12 months (Avoid repeated freezing and thawing)

### Application Note

Recommended Dilutions ELISA 1/5000-10000;FACS 1/100

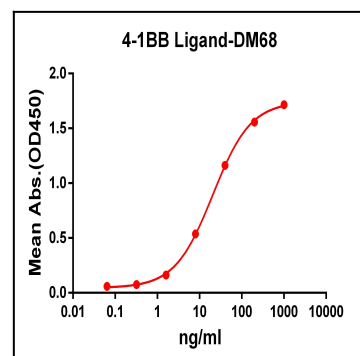


Figure 1. ELISA plate pre-coated by 2 µg/ml (100 µl/well) Human 4-1BB Ligand protein, mFc-His tagged protein can bind Rabbit anti-4-1BB Ligand monoclonal antibody (clone: DM68) in a linear range of 1-100 ng/ml.

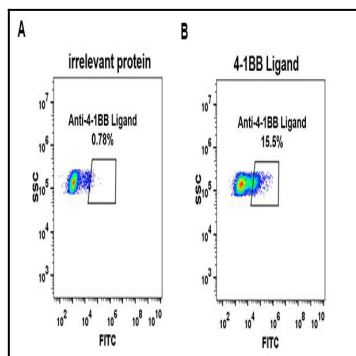


Figure 2. Expi 293 cell line transfected with irrelevant protein (A) and human 4-1BB Ligand (B) were surface stained with Rabbit anti-4-1BB Ligand monoclonal antibody 1 $\mu$ g/ml (clone: DM68) followed by Alexa 488-conjugated anti-rabbit IgG secondary antibody.

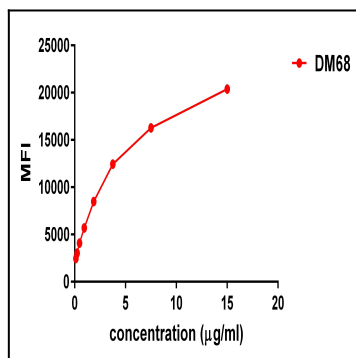


Figure 3. FACS data of serially titrated Rabbit anti-4-1BB Ligand monoclonal antibody (clone: DM68) on Raji cells. The Y-axis represents the mean fluorescence intensity (MFI) while the X-axis represents the concentration of IgG used.