

12-9040: Anti-CTLA-4 antibody(DM50), Rabbit mAb

Clonality :	Monoclonal
Clone Name :	DM50
Application :	ELISA,FACS
Reactivity :	Human
Alternative Name :	CTLA4, CD152
Isotype :	Rabbit IgG
Immunogen Information :	Recombinant human CTLA4(Gln36-Ser161) produced by using human HEK293 cells

Description

Leukocyte surface antigen CD47 is also known as Antigenic surface determinant protein OA3, Integrin-associated protein (IAP) and Protein MER6. CD47 contains 1 Ig-like V-type (immunoglobulin-like) domain. CD47 is very broadly distributed on normal adult tissues. CD47 has a role in both cell adhesion by acting as an adhesion receptor for THBS1 on platelets, and in the modulation of integrins and plays an important role in memory formation and synaptic plasticity in the hippocampus by similarity. CD47 is the receptor for SIRPA, binding to which prevents maturation of immature dendritic cells and inhibits cytokine production by mature dendritic cells. CD47 Interaction with SIRPG mediates cell-cell adhesion, enhances superantigen-dependent T-cell-mediated proliferation and costimulates T-cell activation.

Product Info

Amount :	100 µg
Purification :	Purified from cell culture supernatant by affinity chromatography
Content :	Preservative: 0.1% Procline 300 Constituents: 50% Glycerol; PBS,pH 7.4; 0.1% BSA Not Sterile
Storage condition :	Store at -20°C for 12 months (Avoid repeated freezing and thawing)

Application Note

Recommended Dilutions ELISA 1/5000-10000;FACS 1/100

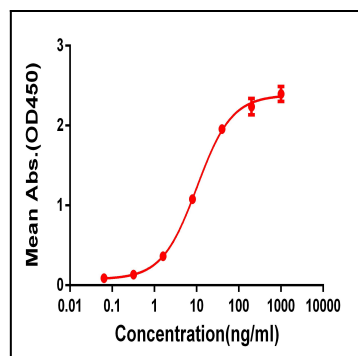


Figure 1. ELISA plate pre-coated by 2 µg/ml (100 µl/well) Human CTLA4 protein, mFc-His tagged protein can bind Rabbit anti-CTLA4 monoclonal antibody (clone: DM50) in a linear range of 1-100 ng/ml.

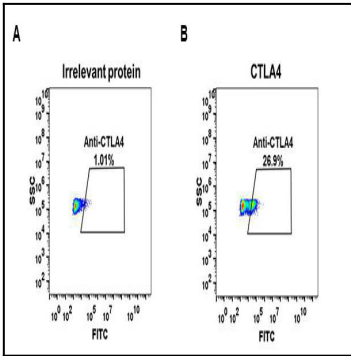


Figure 2. Expi 293 cell line transfected with irrelevant protein (A) and human CTLA4 (B) were surface stained with Rabbit anti-CTLA4 monoclonal antibody 1µg/ml (clone: DM50) followed by Alexa 488-conjugated anti-rabbit IgG secondary antibody.

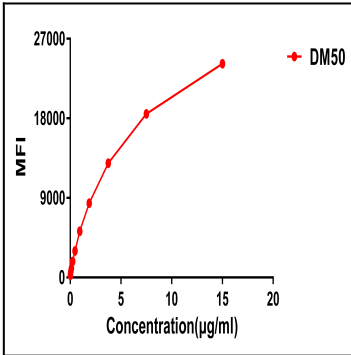


Figure 3. FACS data of serially titrated Rabbit anti-CTLA4 monoclonal antibody (clone: DM50) on Raji cells. The Y-axis represents the mean fluorescence intensity (MFI) while the X-axis represents the concentration of IgG used.

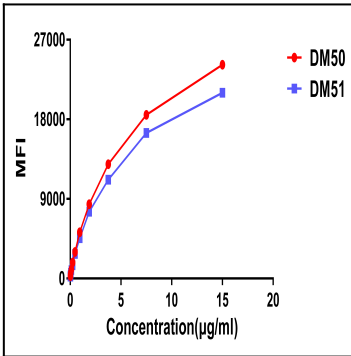


Figure 4. Affinity ranking of different Rabbit anti-CTLA4 mAb clones by titration of different concentration onto Raji cells. The Y-axis represents the mean fluorescence intensity (MFI) while the X-axis represents the concentration of IgG used.