

12-9005: Anti-SIRP Alpha antibody(DM8), Rabbit mAb

Clonality :	Monoclonal
Clone Name :	DM8
Application :	ELISA
Reactivity :	Human
Alternative Name :	BIT, CD172a, MFR, MYD-1, P84, PTPNS1, SHPS-1, SHPS1, SIRP, SIRP-ALPHA-1, SIRPalpha, SIRPalpha2
Isotype :	Rabbit IgG
Immunogen Information :	Recombinant human SIRP Alpha (Glu31-Arg370) produced by using human HEK293 cells

Description

The protein encoded by this gene is a member of the signal-regulatory-protein (SIRP) family, and also belongs to the immunoglobulin superfamily. SIRP family members are receptor-type transmembrane glycoproteins known to be involved in the negative regulation of receptor tyrosine kinase-coupled signaling processes. This protein can be phosphorylated by tyrosine kinases. The phospho-tyrosine residues of this PTP have been shown to recruit SH2 domain containing tyrosine phosphatases (PTP), and serve as substrates of PTPs. This protein was found to participate in signal transduction mediated by various growth factor receptors. CD47 has been demonstrated to be a ligand for this receptor protein. This gene and its product share very high similarity with several other members of the SIRP family. These related genes are located in close proximity to each other on chromosome 20p13. Multiple alternatively spliced transcript variants have been determined for this gene.

Product Info

Amount :	100 µg
Purification :	Purified from cell culture supernatant by affinity chromatography
Content :	Preservative: 0.1% Procline 300 Constituents: 50% Glycerol; PBS, pH 7.4; 0.1% BSA Not Sterile
Storage condition :	Store at -20°C for 12 months (Avoid repeated freezing and thawing)

Application Note

Recommended Dilutions FACS 1/100; IP 1/30

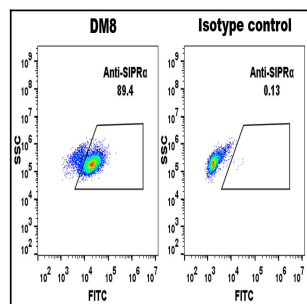


Figure 1. THP-1 cell line were surface stained with Rabbit anti-SIRP Alpha monoclonal antibody 1µg/ml (clone: DM8) and Rabbit IgG isotype control antibody followed by Alexa 488-conjugated anti-rabbit IgG secondary antibody.

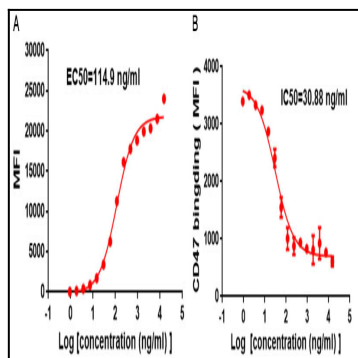


Figure 2. A) FACS data of serially titrated Rabbit anti-SIRP Alpha monoclonal antibody (clone: DM8). The Y-axis represents the mean fluorescence intensity (MFI) while the X-axis represents the concentration of IgG used. B) Competition assay demonstrating DM8 blockade of CD47 binding to THP-1 cells. IC50=30.88ng/ml.