

12-9002: Anti-BCMA bispecific antibody(DM16)(Discontinued)

Clonality :	Monoclonal
Clone Name :	DM16
Application :	FACS
Reactivity :	Human
Alternative Name :	TNFRSF17, CD269, BCM, BCMA
Isotype :	Rabbit scfv
Immunogen Information :	Recombinant human BCMA (Met1-Ala54) produced by using human HEK293 cells

Description

BiTE bispecific antibody is an Engineered fusion protein constructed from two single-chain variable fragments (scFvs) of different monoclonal antibodies. One of the scFvs will be constructed from an anti-CD3 monoclonal antibody, and the other scFv fragment which linked by a linker region will be made from an anti-Tumor cell specific monoclonal antibody. The B-cell maturation protein (BCMA or BCM) is a member of the TNF-receptor superfamily. This receptor is preferentially expressed in mature B lymphocytes, and may be important for B cell development and autoimmune response. This receptor has been shown to specifically bind to the tumor necrosis factor (ligand) superfamily, member 13b (TNFSF13B/TALL-1/BAFF), and to lead to NF-kappaB and MAPK8/JNK activation. This receptor also binds to various TRAF family members, and thus may transduce signals for cell survival and proliferation.

Product Info

Amount :	100 µg
Purification :	Purified from cell culture supernatant by affinity chromatography
Content :	Preservative: 0.1% Procline 300 Constituents: 50% Glycerol; PBS, pH 7.4; 0.1% BSA Not Sterile
Storage condition :	Store at -20°C for 12 months (Avoid repeated freezing and thawing)

Application Note

Recommended Dilutions FACS 1/100; MMTumor cell killing

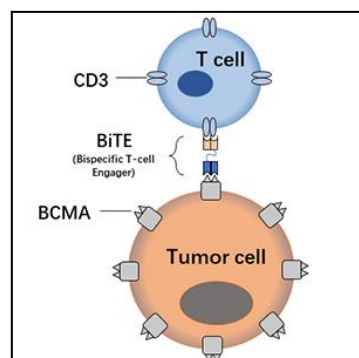


Figure 1. The basic principle of BiTE cell killing assay. The BiTE molecule can effectively bring T cells to tumor target cells and stimulate tumor cell killing activity of T cells.

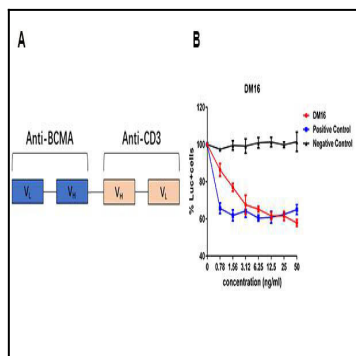


Figure 2. A: The scheme of Anti-BCMA BiTE molecule. B: Tumor cell killing assay. NCI-H929 cells (stably transfected with luciferase), were incubated with freshly isolated human PBMC, and different concentration of BiTE antibodies constructed from rabbit Anti-Human BCMA/TNFRSF17 Clone DM16 , or BB2121 originated huC11D5.3 clone or a no BCMA binding clone as negative control (black line). After 48hrs incubation, the viable NCI-H929 tumor cells were measured by luciferase activity assay.