

## 36-1681: Monoclonal Antibody to gp100 / Melanosome / PMEL17 / SILV (Melanoma Marker)(Clone : SPM286)

<b>Clonality :</b>	Monoclonal
<b>Clone Name :</b>	SPM286
<b>Application :</b>	FACS,IF,IHC
<b>Reactivity :</b>	Human
<b>Gene :</b>	PMEL
<b>Gene ID :</b>	6490
<b>Uniprot ID :</b>	P40967
<b>Format :</b>	Purified
<b>Alternative Name :</b>	PMEL,D12S53E,PMEL17,SILV
<b>Isotype :</b>	Mouse IgG2b, kappa
<b>Immunogen Information :</b>	Membranes from a human melanoma metastasis

### Description

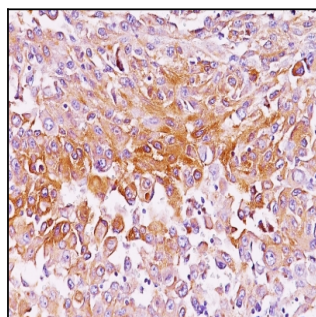
By immunohistochemistry, it specifically recognizes a protein in melanocytes and melanomas. This MAb reacts with junctional and blue nevus cells and variably with fetal and neonatal melanocytes. Intradermal nevi, normal adult melanocytes, and non-melanocytic cells are negative. It does not stain tumor cells of epithelial, lymphoid, glial, or mesenchymal origin. This Mab labels formalin-fixed, paraffin-embedded melanomas and other tumors showing melanocytic differentiation.

### Product Info

<b>Amount :</b>	100 µg
<b>Purification :</b>	Affinity Chromatography
<b>Content :</b>	100 µg in 500 µl PBS containing 0.05% BSA and 0.05% sodium azide. Sodium azide is highly toxic.
<b>Storage condition :</b>	Store the antibody at 4°C; stable for 6 months. For long-term storage; store at -20°C. Avoid repeated freeze and thaw cycles.

### Application Note

Flow Cytometry (1-2ug/million cells); Immunofluorescence (1-2ug/ml); Immunohistochemistry (Formalin-fixed) (1-2ug/ml for 30 minutes at RT)(Staining of formalin-fixed tissues requires heating tissue sections in 10mM Tris with 1mM EDTA, pH 9.0, for 45 min at 95°C followed by cooling at RT for 20 minutes);



Formalin-fixed, paraffin-embedded human Melanoma stained with gp100 Monoclonal Antibody (SPM286).